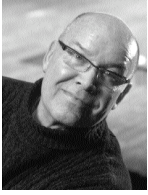


# Welcome to THE OLD GLOBE



Holiday Greetings to one and all! Let's face it, it's exhausting enough trying to shop for the holidays and be "original," so whenever it comes to tradition, one breathes a sigh of relief. And what an extraordinary tradition we have secured for our own Balboa Park Wonderland.

Dr. Seuss' *How the Grinch Stole Christmas!* echoes perfectly our beloved Audrey Geisel's wish that that Greenest of Meanies should find a permanent home here in San Diego, where, frankly, he was "conceived" so long ago. It wouldn't be Christmas without him!

And drawing ever closer to our neighbors across the border, having *La Pastorela* as the perfect complement to our Seussian caterwauling carol is proof positive that when it comes to tradition, we've cornered the market in some of the holiday's choicest bonbons. Have a wonderful, traditional, and loving family holiday, each and every one of you, and so many thanks for being in ours!

JACK O'BRIEN  
*Artistic Director*

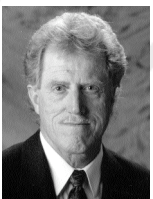


Thank you for joining us for this holiday season at The Old Globe. It has been a year of celebrations for the Theatre, having kicked off our 70th Anniversary Season this summer, as well as launching the enormously successful world-premiere musical, *Chita Rivera: The Dancer's Life*, this fall, which is currently playing to sold-out houses on Broadway. We now welcome back for its eighth year our delightful holiday musical, Dr. Seuss' *How the Grinch Stole Christmas!*, made possible through the generosity of Audrey Geisel, *The San Diego Union-Tribune*, and other magnanimous sponsors.

We are so pleased to bring this holiday tradition to San Diego year after year, along with many "Grinch" outreach programs in the community. In addition to providing 4,000 free tickets for underserved children throughout the run, the Globe is again presenting the Grinch Children's Reading Initiative, an ongoing literacy project tied in with our annual Seuss-abration event, as well as the enormously popular Grinch Family Experience — back again for a third year — offering a day of fun, hands-on theatre activities for children and families while raising money for the Globe's education programs. We are also pleased to bring back the enchanting bilingual nativity play, Teatro Máscara Mágica's *La Pastorela*, in the Cassius Carter Centre Stage.

At this time of year I encourage you to consider making or renewing your year-end or special holiday gift in support of The Old Globe and all that you have come to cherish about the institution — from the perennial *Grinch*, to our thrilling Broadway-bound productions, to the Summer Shakespeare Festival. Ticket sales cover only 55% of the cost of mounting these world-class productions, and we rely on your contributions to help ensure the artistic vitality of the Globe today and for years to come. We sincerely thank you for your ongoing support, and wish you and your families all the best this holiday season.

LOUIS G. SPISTO  
*Executive Director*



Our Christmas customs have less to do with the Nativity than with midwinter pagan observances begun centuries before. The Roman world into which Christ was born celebrated the Festival of Saturn, December 17-24, a week of parties and gift exchanges. Celebrating Christmas at the time of the winter solstice (December 22, the northern hemisphere's shortest day) connected the Christian celebration with older festivals for the unconquered sun.

Houses were decorated with greenery and lights; presents were given to children and the poor. Evergreen trees placed indoors at Christmas were reminders that winter's suffering would be followed by seasons of rebirth and fullness: spring and summer. Winter was a time of frailty often fatal to human beings. The trappings of Christmas were optimistic promises of better times to come.

In Dr. Seuss' graceful fable of the season, it is a child's love, given and returned, that restores hope and joy.

It's been a rough year for many. As love's healing power redeems the Grinch, may the spirit of the season refresh you and yours.

JERRY PATCH  
*Resident Artistic Director*

# 2005 Season Sponsors

The Old Globe is deeply grateful to its Season Sponsors, each of whom has made an annual donation of \$50,000 or greater. These gifts are critical to maintaining the theatre's high quality of artistic programming, and award-winning work in the community. The Board, staff and artists of the Globe are honored by this endorsement of the theatre's work.

**The Lipinsky Family**

**Donald and Darlene Shiley**

**Sheryl and Harvey P. White**

**Karen and Donald Cohn**

**Conrad Prebys**

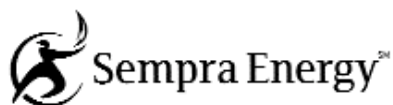
**Valerie and Harry Cooper**

**Norma Jean "Jake" Yonchak  
and Todd Figi**

**Chairwoman Pam Slater-Price  
and the County of San Diego**

**Anonymous**

**WELLS  
FARGO**



**QUALCOMM®**



Season Sponsors receive the ultimate level of access, recognition, benefits and services. To join this most cherished group of friends, please contact Todd Schultz, Director of Development, at (619) 231-1941 x2310.

# Executive Producers - Leadership Gifts

The Executive Producers are a special group of friends who believe that The Old Globe plays an essential role in this community. Each has made a recent leadership gift of \$1,000,000 or greater to significantly enhance The Old Globe today, paving a bright future for the Globe in years to come:

\$10,000,000 or greater

**Conrad Prebys**

\$5,000,000 or greater

**Sheryl and Harvey P. White**

\$1,000,000 or greater

**Audrey S. Geisel/  
San Diego Foundation Dr. Seuss Fund**

**Estate of Beatrice P. Lynds**

**Mr. and Mrs. Victor H. Ottenstein**

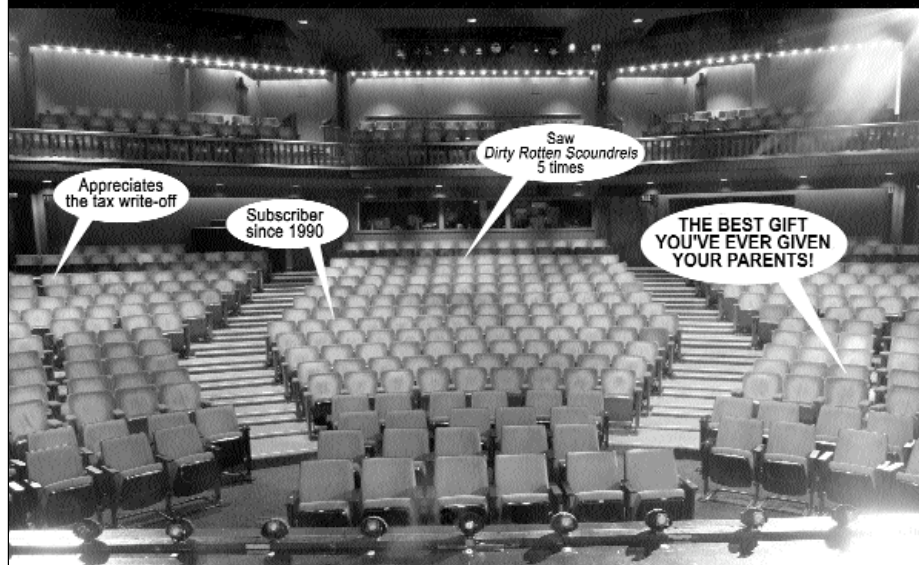
**Estate of Dorothy Shorb Prough**

**Donald and Darlene Shiley**

We applaud the leadership and vision of these truly wonderful friends. To learn more about becoming an Executive Producer, please contact Todd Schultz, Director of Development, at (619) 231-1941 x2310.

*Listing represents gifts received after January 2000.*

## NAME A GLOBE SEAT FOR THE HOLIDAYS



**SPONSOR A SEAT TODAY AND HAVE YOUR NAME  
INSCRIBED INTO GLOBE HISTORY!**

The Old Globe Theatre now has new seats, thanks to the generosity of many of our community members, bringing your comfort level up to that of Globe performance quality.

Installing these beautiful new seats and carpeting has been a major undertaking, and we hope you will help us defray the costs by naming one or more of the new seats. Sponsor a seat for \$5,000, and we will inscribe your name on a brass arm-rest plaque, as a visible acknowledgment of your leadership in Globe support.

The Old Globe begins the 21st Century with national and international artistic presence like never before. Reserve your place in the history of The Old Globe by calling our Development Office at (619) 231-1941 x2309 today.

 **THE OLD GLOBE**

The Old Globe gratefully acknowledges the extraordinary support of our title sponsor for Dr. Seuss' *How the Grinch Stole Christmas!*

The San Diego  
**Union-Tribune.**

The Old Globe wishes to acknowledge and thank

**Audrey S. Geisel**

and

**The San Diego Foundation**

**Dr. Seuss Fund**

for bringing this holiday production to San Diego and for their outstanding support of The Old Globe.

Special Thanks to

**Bank of America.** 

Bank of America continues its strong support of the Globe with their support of Dr. Seuss' *How the Grinch Stole Christmas!*. We remain extremely grateful to Bank of America for their valued partnership in providing both world-class theatre and outstanding arts education programs.



THE OLD GLOBE

San Diego  
**Union-Tribune.**

presents

Dr. Seuss'  
**How The  
GRINCH  
STOLE  
CHRISTMAS!**™

Book & Lyrics by

**Timothy Mason**

Music by

**Mel Marvin**

Scenic Design  
**John Lee**

**Beatty**  
Costume Design

**Robert Moran+**

Lighting Design  
**Pat Collins**

Stage Manager  
**Leila Knox**

Assistant Stage Manager  
**Tracy Skoczelas**

Musical Staging Re-Created by  
**James Vasquez**

Associate Musical Direction/Conductor  
**Lisa LeMay**

Associate Director  
**Brendon Fox**

Choreography  
**John DeLuca**

Musical Direction  
**Phil Reno**

Directed by  
**Jack**

---

+Associate Artist of The Old Globe

Produced by special arrangement with Dr. Seuss Enterprises, L.P.  
How the Grinch Stole Christmas! book and characters™ and ©  
1957 Dr. Seuss Enterprises, L.P.  
Dr. Seuss properties™ & © 2005 Dr. Seuss Enterprises, L.P. All  
Rights Reserved.

# Cast of Characters

IN ORDER OF APPEARANCE

*Old* ..... *Max*  
.....  
..... Ken ..... Land\*  
*Cindy-Lou Who* ..... Mackenzie  
Holmes (W) -or- Timyra-Joi (R)  
*J.P.* ..... *Who*  
.....  
... James ..... Vasquez\*  
*Mama* ..... *Who*  
.....  
.... Melinda ..... Gilb\*  
*Grandpa* ..... *Seth* ..... *Who*  
..... Steve  
G u n d e r s o n \*  
*Grandma* ..... *Who*  
.....  
Eileen ..... Bowman\*  
*Boo Who* ..... Ari  
Lerner (W) -or- Ari Krasner (R)  
*Annie Who* ..... Anna Strick-  
land (W) -or- Janelle Wen (R)

W=White Group

\*Member of Actors' Equity Association, the Union of Professional Actors and

TIME: Late December  
LOCATION: Some Place Very Near  
*Who*-ville

# MUSICAL NUMBERS

“The Holly And The Ivy”  
 ..... Who  
 C h o r a l e  
 “Who Likes Christmas?” ..... Who Family,  
 Grown-up Whos & Little Whos  
 “I Hate Christmas Eve” ..... The Grinch,  
 Young Max, J.P. Who, Mama Who,  
 Grandpa Seth Who, Grandma  
 Who, Cindy-Lou Who,  
 Betty-Lou Who, Danny Who, Annie Who,  
 Boo Who  
 “ W h a t c h a m a - w h o ”  
 ..... The  
 Grinch, Little Whos  
 “Good King Wenceslas”  
 .....  
 Who Chorale  
 “I Hate Christmas Eve” (Reprise)  
 ..... The Grinch

## WHO-CHESTRA

C o n d u c t o r / K e y b o a r d  
 ..... Lisa  
 L e M a y  
 V i o l i n  
 .....  
 ..... Anna Rose  
 V i o l i n  
 .....  
 Alyze Dreiling-Hammer  
 C e l l o  
 .....  
 ..... Lorie Kirkell

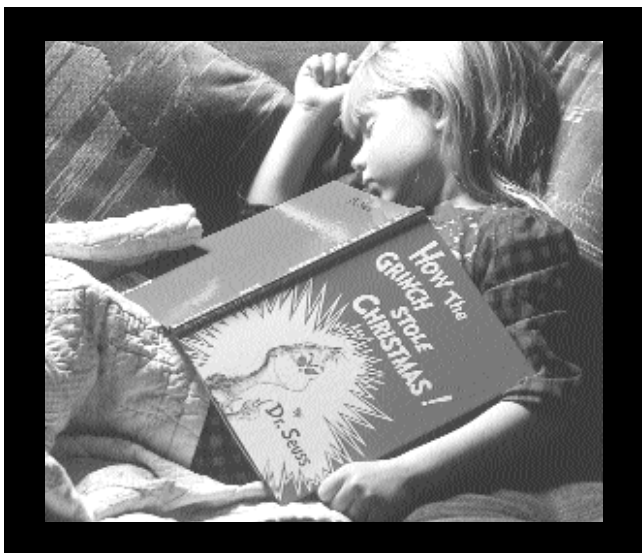
# DIRECTOR'S

There's really no point in telling you much about *How the Grinch Stole Christmas!*, since you are about to see for yourself. If this is your very first time in a theatre, I can only say that I envy you the next 80 or so minutes, and rest assured that we're going to do our very best to make sure you never forget this moment, and that you continue to come back for the rest of your life.

If this is your zillionth time in the theater, you know how futile these program notes can be. If I have to "explain" anything, I probably shouldn't have tried to put it on stage in the first place, right? So we can get right past that one, as well.

No, what I wish to share with you in the brief moments before the house lights go down, is an appreciation for a very special kind of genius. The kind of genius that uses words in such an enchanting way as to make us — whether we are children or adults — want to read them! Actually want to read!

No need to talk about philosophy: there's plenty of it tucked away in the work of Dr. Seuss, and there will be ample opportunities for discovery in the delicious musical just ahead. But it's not just that Dr. Seuss had something to write about — it's the way he chose to write it. Words that are fun to see. Words that are fun to say. Words that must be repeated out loud, over and over, and yet, words that never tire our ears, no matter how many generations continue to repeat them.



Every *Who*  
Down in *Who*-ville  
Liked Christmas a lot ...

But the Grinch,  
Who lived just north of  
*Who*-ville,

Made up words. Inverted words. Silly words. Solemn words. Musical words. Percussive words. Words that float like feathers, that loop like birds, that squiggle like gerbils, that splat like tubas.

What an imagination he had! What a thrilling, unmistakable, unique, fabulous imagination. And that he chose to share it with us, while we're young — well, that's the most amazing thing of all!

He made, in the Grinch, a fantabulous creature, one that is destined to live forever. Right up there, I believe, with King Lear, and Harpagon, and Oedipus, and Saint Joan. A creature that fascinates, that challenges, that insults, that even "sacrifices" us.

And one we take to our hearts, like that other glowing holiday gorgon, Ebenezer Scrooge — and for some of the very same reasons. But in giving this creature to us, Dr. Seuss chose words that have never been put together in a similar way before, nor since. He's a reader's dream. Thank God!

It seems to us here at the Globe we have a great deal to be thankful for this holiday season. We are all here, together for the holidays, together with our real and chosen families. That's quite enough of a gift; but there in the same stocking, is someone called Dr. Seuss. And that, just possibly, is the very best present of all.

— Jack O'Brien



## Alex Apostolidis

(Grown-up Who Ensemble)



THE OLD GLOBE: Dr. Seuss' *How the Grinch Stole Christmas!* ('98-'04). ELSEWHERE: Credits include *Lend Me a Tenor*, Bellevue Civic Theatre;

*Send in the Clones*, Golden Fish Theatre; *Sweeney Todd*, Fritz Theatre; *Arcadia*, NCRT; *Hair*, the Lyceum and Diversionary Theatres; *The Moonshot Tape*, Lyceum Late Night; *Alabama Rain*, Riverside Theatre Company; *Do You Want to Play Baseball?* (Director), Mae West Fest. FILM: *Plan of Attack*, *Mr. Jones*. TV: *The Chronicle*.

## Eileen Bowman

(Grandma Who)

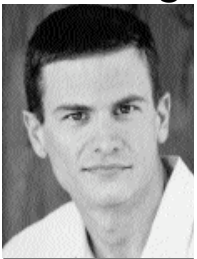


THE OLD GLOBE: Dr. Seuss' *How the Grinch Stole Christmas!* ('98-'04), *The Enchanted*. ELSEWHERE: *The Music Man*, *Singin' in the*

*Rain*, *My Fair Lady* (Eliza Doolittle), San Diego Civic Light Opera. Other credits include *Animal Crackers*, *Reunion*, *Dames at Sea*, *Beach Blanket Babylon* (Snow White) at the Sands Hotel in Las Vegas. Film and TV credits include several movies of the week as well as *Top Dog*, starring Chuck Norris.

## Leo Daignault

(The Grinch)



THE OLD GLOBE: Debut. BROADWAY: *Avenue Q*. NATIONAL TOURS: *The Full Monty*, *The Scarlet Pimpernel*, *Miss Saigon*, *Forever Plaid* (originating role of Jinx) in

Boston, San Diego, Tokyo and Chicago.

REGIONAL: *La Cage Aux Folles*, *A Little Night Music*, *Babes in Arms*, *Pacific Overtures*. TV: *The Sopranos*, *The Rosie O'Donnell Show*, *Silk Stalkings*, *Pensacola: Wings of Gold*, *How to Marry a Billionaire*. RECORDINGS: *Johnny Mathis Sings Broadway*, *Sondheim III*, *Shakespeare on Broadway*, *The Burt Bacharach Album*, *Off Broadway's Wings*, *Audra McDonald's Happy Songs*.

Leo is a member of Actors Equity. Visit

www.leodaignault.com.

## Ryan Drummond

(Grown-Up Who Ensemble)



THE OLD GLOBE: Dr. Seuss' *How the Grinch Stole Christmas!* ('98-'99). REGIONAL: *Palm Beach: The Screwball Musical*, *I Love You You're*

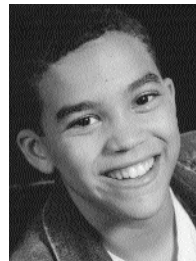
*Perfect Now Change*, *Forever Plaid*, *Shear Madness*, *Cotton Patch Gospel*, *Into the Woods*, *Godspell*.

FILM/TV: *Bring It On*, *Based on a True Story...*, *Veronica Mars*, *Point Pleasant*, *The Invisible Man*, *The Chronicle*, *The Rosie O'Donnell Show*, *Baywatch*.

VOICEOVER: The official voice of "Sonic The Hedgehog" for Sega Gaming Corp. EDUCATION: Eastern Michigan University. Please visit [www.RyanDrummond.com](http://www.RyanDrummond.com).

## Adam Faison

(Danny Who, White Group)



THE OLD GLOBE: Dr. Seuss' *How the Grinch Stole Christmas!* ('04). Adam is excited to be back for his second year.

He is a 7th grader at Twin Peaks Middle School in Poway. Most recently, Adam was part of the children's ensemble in *Evita* at the Civic Theatre (Broadway/San Diego). Other recent shows include *The Roar of the Greasepaint* (Urchin), *Starlight Musical Theatre*; *Pippi Longstocking* (Tommy), *Seussical*, *The Musical* (Jojo), *Alice, the Musical*, in *Wonderland* (March Hare), *Joseph...Dreamcoat* (Benjamin), *A Midsummer Night's Dream* (Cobweb, Francis Flute and Thisby) and *Charlie and the Great Glass Elevator* (Charlie). Adam would like to thank his family and friends for all their support. He dedicates his performance to his grandfather, whom he was named after, who passed away in October.



## Danielle Forsgren

(Grown-up Who Ensemble)

THE OLD GLOBE: Dr. Seuss' *How the Grinch Stole Christmas!* ('98-

'04) ELSEWHERE: Hosts a very popular internet radio show called *The Diva Craft Lounge* on [www.WorldTalkRadio.com](http://www.WorldTalkRadio.com).

Danielle created the role of Lucy in the musical, *Dracul*, at the San Diego Repertory Theatre's Lyceum. Other leads include: Guest Star and Featured Entertainer, Emmy Awards; the British National Tour of *Side by Side by Sondheim* and Eva Peron in *Evita*; plus numerous operatic leads. Ms. Forsgren proudly holds the Metropolitan Opera National Council's Saunderson Award and a first place San Diego Classical Soloist medal. She is the owner of the [ScrapbookDiva.com](http://ScrapbookDiva.com), [iLuvScrapbooking.com](http://iLuvScrapbooking.com) and [Tiara.com](http://Tiara.com) businesses.

## Melinda Gilb

(Mama Who)



THE OLD GLOBE: Dr. Seuss' *How The Grinch Stole Christmas!* ('98-'01, '03-'04), *Suds*, which she co-wrote and starred.

BROADWAY: *Singin' in the Rain* (original cast). OFF-BROADWAY: *Suds*, *Back to Bacharach* and *David*. First National tour of Joseph Papp's *The Pirates Of Penzance*. REGIONAL: Mrs. Lovett in *Sweeney Todd*, *Starlight Theatre* (Craig Noel Award), *The Fritz Theatre*; *The Smell of the Kill* (dir. Brendon Fox), *North Coast Rep*; *Assasins*, *Cygnets Theatre*; *Working*, *Six Women with Brain Death*, *Always Patsy Cline* and numerous productions of *A Christmas Carol* at San Diego Rep; *The Melinda and Steve Show* with Steve Gunderson at the Theatre in Old Town. Television appearances include two seasons of *The Full Wax* with Mo Gaffney for BBC-1; guest starred on *Becker* with Ted Danson. Melinda's favorite role is that of Mama to her 2 1/2 year old son Knight.

## Steve Gunderson

(Grandpa Seth Who)

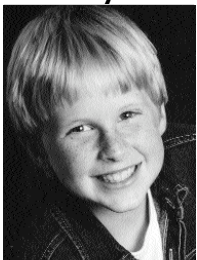


THE OLD GLOBE: Dr. Seuss' *How the Grinch Stole Christmas!* ('98-'01, '03, originated the role of Papa Who), *A Trip to Chinatown*, *Hadrian VII*, *Suds* (co-author,

arranger). He appeared in *Suds* in the New York, San Francisco and Toronto productions and directed the Calgary and Sarasota productions. OFF-BROADWAY: *Forever Plaid*, *Suds*, *Back to Bacharach and David* (dir. Kathy Najimy). In New York, he appeared in *Butley*, *Street Scene*, *The Melinda and Steve Show* (with Melinda Gilb). NATIONAL TOUR: *The Grapes of Wrath* (with Ed Harris). REGIONAL: Major roles at Pasadena Playhouse, Laguna Playhouse, Canon Theatre, Alliance Theatre, San Diego Rep, Welk Resort Theatre, Phoenix Little Theatre, La Mirada Theatre, Alex Theatre, Theatre in Old Town. He is a Drama-Logue, Robby (L.A.) and Dean Goodman (San Francisco) award winner. San Diego audiences know him as "Sparky" in *Forever Plaid* (also in NY and LA), Judge Turpin in *Sweeney Todd* at the Fritz, Bob Cratchit in *A Christmas Carol*, as well as roles in *I Love You, You're Perfect, Now Change*. He has composed scores for *Dixie Highway*, *The Brontes* and for TV's *Romancing America*, *Country Inns* and *TV411*. His music can currently be heard in *A Christmas Carol* at San Diego Rep and *Welk Musical Christmas* at the Welk Resort. A member of the Dramatists Guild, he has had several plays produced, including *Something to Remind Me* and *At the Twilight*. Special thanks to Kaore.

## Corey Hable

(Danny Who, Red Group)



THE OLD GLOBE: Dr. Seuss' *How the Grinch Stole Christmas!* ('03-'04). Feeling like a veteran, Corey is appearing for his third year in

*Grinch*. His interests include singing, dancing, gymnastics, and designing roller coasters. Favorite roles include Chip in *Beauty and the Beast*, Linus in *Charlie Brown*, Tiny Tim in *A Christmas Carol*, and Wacky the tap dancing dummy in *Annie* (winner of the Spark award).

His favorite Dr. Seuss book is, *How the Grinch Stole Christmas!*

## Mackenzie Holmes

(Cindy-Lou Who, White Group)



Mackenzie is honored and excited to be making her debut at The Old Globe. She is a 3rd-grader

at La Jolla County Day School. LOCAL CREDITS: *The Sound of Music* (Gretl), *The Roar of the Greasepaint* (Urchin), Starlight Theatre. Mackenzie studies voice and acting under the guidance of Leigh Scarritt. In addition to singing, dancing and acting, she enjoys reading and snow skiing.

## Caroline Hyatt

(Betty-Lou Who, Red Group)



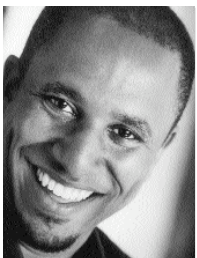
THE OLD GLOBE: Dr. Seuss' *How the Grinch Stole Christmas!* ('03-'04).

ELSEWHERE: *The Music*

*Man*, *The Roar of the Greasepaint*, Starlight Musical Theatre; *Oliver!* (Dodger), *The Wizard of Oz* (Scarecrow), *Godspell Jr.* (Beautiful City Soloist), Joan B. Kroc Theatre; *Les Misérables*, *Li'l Abner*, *The Wizard of Oz*, *Annie*, Summer Youth Theatre. Caroline is a fifth-grader who loves to draw as well as sing, dance and act.

## Ron Christopher Jones

(Grown-up Who Ensemble)



THE OLD GLOBE: Dr.

Seuss' *How the Grinch Stole Christmas!* ('04), *The King of the Kosher Grocers*. REGIONAL: *My One and Only*, *Mr. Magix*, Downey CLO and Starlight; *Man of La Mancha*, SBCLC; *Play On!*, Pasadena Playhouse; *The All Night Strut*, West Coast Tour. TV: *The Jamie Kennedy Experiment*, *Surrender Dorothy* starring Diane Keaton. EDUCATION: Mr. Jones received a BFA in Acting from the United States International University. Ron would like to thank his cast, family and friends for their love and support. He is a member of the Musical Theatre Guild.



## Ari Krasner

(Boo Who, Red Group)

The Old Globe: Debut. OTHER CREDITS: *Pippi Longstocking*, *Joseph...Dreamcoat*, *Alice*,

*The Musical*, *In Wonderland*, J\*Company; *Singin' in the Rain*; CCT; Tap soloist, North County Dance Arts. RECORDING: Voice-Overs for Knowledge Adventure/ JumpStart Toys. Ari is a 4th-grade student at San Diego Jewish Academy. He loves singing, tap dancing, drumming and violin. He also loves soccer, skateboarding, ice skating and reading. Thanks Mom and Dad for all your support and encouragement, and Daniel, you are the World's Best Brother! Ari's favorite Dr. Seuss book is *The Cat in the Hat*.



## Ken Land

(Old Max)

THE OLD GLOBE: Dr. Seuss' *How the Grinch Stole Christmas!* ('04). BROADWAY: *The Scarlet Pimpernel* (all three versions), *Victor/Victoria*. OFF-BROADWAY: *The*

*Gig*, Manhattan Theatre Club; *Little Shop of Horrors*, Orpheum Theatre; *The Death of Von Richthofen...*, Public Theatre. NATIONAL TOUR: *Sweet Charity* (dir. Bob Fosse), *The Scarlet Pimpernel*, *Little Shop of Horrors* (dir. Howard Ashman), *The Secret Garden*, *Evita* (dir. Harold Prince). REGIONAL: *Sex Sex Sex Sex Sex & Sex*, Matrix Theatre; *Romeo and Juliet*, Goodspeed; *I'm Not Rappaport*, *The Sunshine Boys*, Birmingham Theatre; *Guys and Dolls*, Indiana Rep. FILM/TV: *The Clone*, *Back to You and Me*, *44 Minutes: A Shootout in North Hollywood*, *Six Feet Under*, *Law & Order*, *Malcolm in the Middle*, *Law & Order: SVU*, *Strong Medicine*, *Judging Amy*, *The District*, *One on One*, *Star Trek: Voyager*, *Crossing Jordan*.

## Ari Lerner



(Boo Who, White Group)

THE OLD GLOBE: Dr. Seuss' *How the Grinch Stole Christmas!* ('03-'04). REGIONAL: *A Christmas Carol* (Tiny Tim '01-'02), *Mendel, Inc.*, San Diego

Rep. ELSEWHERE: *One for the Road*, Lamb's Players Theatre; *Oliver!*, *The Music Man* (Winthrop), *The Scarlet Pimpernel*, *Fiddler on the Roof*, *The Wizard of Oz*, Starlight Musical Theatre. Ari has performed on NBC, CBS, Fox and KUSI news shows. Ari appeared as Albert Hauser on *Veronica Mars* in November. I'd like to thank my Mom and Dad for helping me get these fun shows. Ari's favorite Dr. Seuss book is *Horton Hatches the Egg*.

## Anita Deshea Lewis



(Betty-Lou Who, White Group)

THE OLD GLOBE: Dr. Seuss' *How the Grinch Stole Christmas!* ('02-'04). ELSEWHERE: *Annie* (Tessie), *Friday*

*Night Fever* (singer), *The North Star* (Frog), *Charlie and the Chocolate Factory* (Mrs. Beauregarde), *Music Man Jr.* (Zanetta Shinn), *That's Dancing* (singer, dancer), *Alice in Wonderland* (Alice), *Robin Hood the Musical* (Salome) at Valencia Park School of Drama and Dance. Anita began her career at age 3, with her angelic voice. Anita loves to sing and act, and her outgoing personality can be seen in her smile. God has blessed Anita with many extraordinary talents. This is only the beginning for Anita, she will continue to share her talent for many years to come. Her favorite Dr. Seuss book is *Go, Dog Go*.

**Warren G. Nolan, Jr.**  
(Grown-up Who Ensemble)



THE OLD GLOBE: Dr. Seuss' *How the Grinch Stole Christmas!* ('03-'04). REGIONAL: *Avenue X*,

San Diego Rep; *POP Tour* 2003, La Jolla

Playhouse. ELSEWHERE: *Tambourines to Glory*, *Lift Every Voice*, Common Ground Theatre; *Medea*, *Queen of Colchester*, Sledgehammer Theatre; *Falsettos*, Diversionsary Theatre; *Festival of Christmas*, Lamb's Players Theatre; *Songs for a New World*, Actors Asylum; *Ragtime*, Moonlight Amphitheatre; *Pageant*, North Coast Rep; *Black Voices*, *Gospel of Colonus*, *Before it Hits Home*, Teatro Máscara Mágica; *And the Dish Ran Away With the Spoon*, *Antigone*, Grossmont College.

## Katheryne Penny



(Teen Who, White Group)

THE OLD GLOBE: Dr. Seuss' *How the Grinch Stole Christmas!* ('04).

OTHER CREDITS: *The Roar of the Greasepaint*, *Damn Yankees*, *Fiddler on the Roof*, Starlight Musical Theatre; *Nutcracker* (Clara), The Dance Academy; *Pippi Longstocking* (Annika), J\*Company; *The Wizard of Oz* (Dorothy), Dierdre Andrews Summer Theater. Katheryne is a student at All Hallows Academy and her favorite Dr. Seuss book is *I'm Not Going to Get Up Today*.

## Rusty Ross



(Young Max)

THE OLD GLOBE: Dr. Seuss' *How the Grinch Stole Christmas!* ('98-'04). NEW YORK: Robert Wilson's *Alice*, Brooklyn Academy of Music; world premiere of N. Richard Nash's *The*

*Loss of D-Natural*, Lab Theatre; *Checkmate*, School of Visual Arts; *The Haircut*, Oasis Theatre.

REGIONAL: *The Cripple of Inishmaan* and *Proposals*, Depot Theatre; *Blind Date*, Horton by the Stream; *Crimes of the Heart* and *Adventures of Huckleberry Finn*, Totem Pole Playhouse; *Six Degrees of Separation*, Weston Playhouse; *You're a Good Man, Charlie Brown* (guest artist), East Carolina University; *Romeo and Juliet*, Count Basie Theatre; *Big River*, Allenberry Playhouse. FILM: *Sleepy Hollow*, *Clown Karma*. TV: *Law & Order*. TRAINING: Northwestern University.

## Anna Strickland

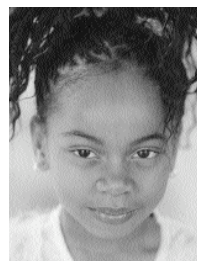


(Annie Who, White Group)

THE OLD GLOBE: Dr. Seuss' *How the Grinch Stole Christmas!* ('03-'04). ELSEWHERE: Annie in San Diego Junior Theatre's *Annie*; *Little Women*, *Alice in Wonderland*, Christian

Youth Theatre; *Traditions of Christmas* ('01-'02) for CCT. Anna placed first in "Song and Dance" at the Broadway Magic Talent Competition 2004. She has also received first place awards at the Spotlight Dance Competition and Showstoppers American Dance Competition. Anna is a 6th-grader at Faith Community School. Her favorite Dr. Seuss book is *There's a Wocket in my Pocket*.

## Timyra-Joi



(Cindy-Lou Who, Red Group)

THE OLD GLOBE: Debut. OTHER CREDITS: *Roar of the Greasepaint*; film *Curious George* (due to release February '06); many

other commercial and TV credits. She sang the National Anthem at the National School Board Association for an audience of 10,000. Timyra-Joi is a dancer at Culture Shock Dance Center. She speaks German and is a 3rd-grader at Albert Einstein Academy. Timyra-Joi loves to dance and sing, her favorite color is blue, and her favorite Dr. Seuss book is *The Cat in the Hat*. She wishes to thank her parents and Ms. Leigh Scarritt for all of their guidance, love and support, and The Old Globe for giving her this opportunity.

**James Vasquez**  
(J.P. Who/Dance Captain)



THE OLD GLOBE: Dr. Seuss' *How the Grinch Stole Christmas!* ('03-'04), *If the Shoe Fits*, *The*

*Boiler Room*. OFF-BROADWAY: New York Shakespeare Festival. REGIONAL: Alabama Shakespeare Festival, Bristol Valley Theatre.

ELSEWHERE: Recent local credits include *Pageant*, Cygnet Theatre, North Coast Rep; *Shear Madness*, Theatre in Old Town. FILM: *29th and Gay*, currently on the film festival circuit. EDUCATION: James is a graduate of the Juilliard School of Drama.



## Jessa Watson (Grown-up Who Ensemble)

THE OLD GLOBE: Dr. Seuss' *How the Grinch Stole Christmas!* ('03-'04). OFF OFF-

BROADWAY: *Under My Apron*, MITF. NATIONAL TOUR: *Suds, the Rockin' 60s Musical Soap Opera*. REGIONAL: *Cabaret, A Christmas Carol*, San Diego Rep. OTHER CREDITS: *Richard III, Furious Blood, Sweet Charity*, Sledgehammer Theatre; *The Importance of Being Earnest, Travesties, Fuddy Meers, As Bees in Honey Drown*, North Coast Rep. Jessa is a proud Member of Actors' Equity.



## Charlotte Mary Wen (Teen Who, Red Group)

THE OLD GLOBE: Dr. Seuss' *How the Grinch*

*Stole Christmas!* ('99-'04), Broadway Junior NAMT 2001 presentation. ELSEWHERE: *Miss Saigon, The Roar of the Greasepaint, Annie, The Wizard of Oz*, Starlight Musical Theatre; *The King and I, Peter Pan*, Moonlight Amphitheatre; *Joseph...Dreamcoat*, San Diego Civic Theatre, J\*Company; *A Year with Frog & Toad, Annie, Seussical, The Sound of Music, Miss Nelson is Missing, You're a Good Man, Charlie Brown, The Magic Mrs. Piggie-Wiggle, Pippi Longstocking, Charlotte's Web*, San Diego Junior Theatre. OTHER: *Lion King Medley Duet*, San Diego Chamber Orchestra; Oregon Bach Festival '03, San Diego Children's Choir. Charlotte is a freshman at Torrey Pines High School and her favorite Dr. Seuss book is *Horton Hears a Who!*.



## Janelle Wen

(Annie Who, Red Group)

THE OLD GLOBE: Dr. Seuss' *How the Grinch Stole Christmas!* ('04).

ELSEWHERE: *Miss Saigon, The Roar of the Greasepaint*, Starlight Musical Theatre; *South Pacific*, Lamb's Players Theatre (Jerome understudy); *A Year with Frog & Toad, Junie B. Jones ...Monkey Business, Annie, Madeline's Rescue, Cinderella*, San Diego Junior Theatre; *Annie, J\*Company*. TV: *Red Skies* pilot, child extra. Janelle is a student at Solana Pacific Elementary and her favorite Dr. Seuss book is *The Lorax*.

## Maddie Shea Baldwin (Little Who Ensemble, White Group)

THE OLD GLOBE: Debut. Other Credits include *The Sound of Music, Madeline's Rescue, Annie*, San Diego Junior Theatre; a school production of *The King and I*. Maddie is a 7th-grader at Francis Parker School. She is a member of MADCAPS, a philanthropic organization. When Maddie isn't singing, dancing or doing homework, she enjoys spending time with friends, family and her dogs Ginger and Daisy.

## Halle Hoffman (Little Who Ensemble, Red Group)

THE OLD GLOBE: Dr. Seuss' *How the Grinch Stole Christmas!* ('04). OTHER CREDITS: *Seussical the Musical, J\*Company, Do You Know Me*, award-winning Video Album by Singer/Songwriter Eve Selis. Aside from acting and voice, she is a talented artist and ballet dancer. Halle's favorite Dr. Seuss books are *Green Eggs and Ham* and *The Cat in the Hat*.

## Austin Michael Potts (Little Who Ensemble, White Group)

THE OLD GLOBE: Dr. Seuss' *How the Grinch Stole Christmas!* ('04). Other Credits: *Oliver!*, Starlight Bowl; *Gypsy*, Lawrence Welk Theater; *Crown City Revue*, Lamb's Players Theatre; *You're a*

*Good Man, Charlie Brown*, La Jolla Stage Co; *Angels Among Us*, 6th @ Penn; *Bye, Bye Birdie*, Coronado Playhouse. TV: *Tiger Cruise* (Disney Channel movie). Austin's favorite Dr. Seuss book is *To Think I Saw it on Mulberry Street*.

## Hannah Prater (Little Who Ensemble, White Group)

THE OLD GLOBE: Debut. REGIONAL: *Tiger at the Gate* (Polyxene), Actors Alliance; *The Roar of the Greasepaint* (Urchin), Starlight Theatre; *Beauty and the Beast* (Chip), San Diego Junior Theatre; and *Snoopy* (Woodstock), Christian Youth Theatre. Hannah is a 5th grader at Santa Fe Christian in Solana Beach. Aside from acting and singing, Hannah enjoys dancing and creating her own plays. Hannah's favorite Dr. Seuss book is *Green Eggs and Ham*.

## Julianna Rose (Little Who Ensemble, Red Group)

THE OLD GLOBE: Dr. Seuss' *How the Grinch Stole Christmas!* ('01-'02). Julianna is thrilled to be back in Whoville! ELSEWHERE: *American Girl Revue* ('06, Becky/Molly), *Annie* (Annie & Molly), 50th Disney Anniversary (Mouseketeer), *Hansel and Gretl* (Nasty), *Gypsy* (Balloon Girl), *The Sound of Music* (Gretl). TV: *Mind of Mencia, Avatar, Handy Manny, Young and the Restless*. FILM: *The Martian Child, Yours, Mine and Ours, Tarzan 2, Deacon's Monday*. Also many TV and radio spots. Julianna loves to sing and perform and just finished producing her first song. Her favorite Dr. Seuss story is this one!

## Keilani Joy Spahn (Little Who Ensemble, White Group)

THE OLD GLOBE: Dr. Seuss' *How the Grinch Stole Christmas!* ('04). Other Credits: *Oliver!*, *School House Rock, The Wizard of Oz, Godspell Junior*, Joan B. Kroc Theater; Gift of Dance School and Company, Ballet Folklorico division. Local venues include: Theatre in Old Town, Del Mar Fair, San Diego County Sheriff's Dept. RSVP ('04-'05), Chula Vista's Norman Park Senior Center ('05), and many other civic events. Keilani's favorite Dr. Seuss book is *Oh, the Places You'll Go!*.

## Celia Tedde (Little Who Ensemble, Red Group)

THE OLD GLOBE: Dr. Seuss' *How the Grinch Stole Christmas!* ('04). OTHER CREDITS: *Pippi Longstocking*, *Joseph...Dreamcoat*, *Seussical*, *The Musical*, J\*Company; *Cinderella* (Cinderella), *The Jungle Book* (King Louie), Theatre Camp; Featured guest vocalist *The Beatles' White Album Live*, Spreckels Theatre, *Abbey Road Live with Symphony Orchestra* (Moog Synthesizer Soloist). Celia is a 3rd-grader at Holmes Elementary. Since her debut last year, Celia's new favorite Dr. Seuss book is *How the Grinch Stole Christmas!*.

## Nathan Wetter (Little Who Ensemble, Red Group)

THE OLD GLOBE: Dr. Seuss' *How the Grinch Stole Christmas!* ('04). OTHER CREDITS: *Henry and Ramona*, *Joseph...Dreamcoat*, *Seussical*, *Alice in Wonderland*, *Once Upon a Mattress*. Nathan's favorite Dr. Seuss book is *Horton Hears a Who*.

## Timothy Mason (Book and Lyrics)

THE OLD GLOBE: Dr. Seuss' *How the Grinch Stole Christmas!*. ELSEWHERE: *Six*, the Guthrie Theatre Lab; *Gold*, (musical with Mel Marvin), the Lyttleton, London; *Mullen's Alley*, *Cannibals*, *The Naked Eye*, Chicago; *Time on Fire*, *The Less than Human Club*, *Ascension Day*, A.C.T.'s Young Conservatory, San Francisco; *The Fiery Furnace* (starring Julie Harris), *Babylon Gardens* (starring Timothy Hutton and Mary-Louise Parker), *Only You*, *Levitiation*, Circle Rep; *Before I Got My Eye Put Out*, South Coast Rep; *Bearclaw*, Seattle Rep; and *In a Northern Landscape*, Actors Theatre of Louisville. Tim has won a Kennedy Center Fund for New American Plays Award, a W. Alton Jones Foundation Grant, a *Drama-Logue* Award and an NEA Writing Fellowship. He is a member of the Dramatists Guild and the Writers Guild of America, East.

## Mel Marvin

## (Composer)

THE OLD GLOBE: Dr. Seuss' *How the Grinch Stole Christmas!*, *Tintypes*. ELSEWHERE: Mel's Broadway credits include *Yentl*, *A History of the American Film*, *Tintypes* (Tony Award® nomination), and *Fascinating Rhythm*; he has had nine shows produced off-Broadway. Other credits include scores for many of America's best-known regional theaters, including Lincoln Center Theatre, Arena Stage, The Guthrie, A.R.T., La Jolla Playhouse, and the Mark Taper Forum, where he was an associate artist and wrote the original music for *Angels in America*. CURRENT PROJECTS: *Guest from the Future*, an opera with libretto by Jonathan Levi, which had its premiere in the Summerscape program at the new Fisher Center for the Arts in July 2004; *Buwalsky*, an opera commissioned by Holland's Opera Spanga, which premiered in The Netherlands in August, 2004 and subsequently toured the U.S., with performances in New Haven and New York City. He is working on a new opera with librettist Laura Harrington, and he is writing a new score for the Guthrie Theater's *Hamlet* in March, 2006. He is head faculty composer and producing director of the Graduate Musical Theatre Writing Program at NYU's Tisch School of the Arts. *How the Grinch Stole Christmas!* is one of seven family musicals Mel has written for his daughter, Kate.

## Jack O'Brien (Director)

Mr. O'Brien's biography may be found on page 27.

## John DeLuca (Choreographer)

FILM: *Memoirs of a Geisha*, *The Terminal*, *Chicago*. TV: 75th Annual Academy Awards, Kennedy Center Honors. NEW YORK: *Minnelli on Minnelli*; *Broadway Sings Elton John*; *Deborah Voight on Broadway*; *Sweet Adeline Encores!*; *Two Gentleman of Verona*, New York Shakespeare Festival. NATIONAL TOUR: *Chita and All That Jazz*, *Brigadoon*, Andrew Lloyd Weber's *Music of the Night*. REGIONAL: Dr. Seuss' *How the Grinch Stole Christmas!*, *Oedipus*, *Private Eye*, *Lucky Guy*, *The Gig*, *Camelot*, *Company*, *Desert Song*, *King & I*, *She Loves Me*, *Fiddler on the Roof*, *Mame*, *West Side Story*, *Finian's Rainbow*. Coached lead performances in many Broadway shows including Natasha Richardson in *Cabaret*, Donna Murphy in *The King & I* and Rosie O'Donnell in *Seussical*, *the Musical*. AWARDS: American Choreography Award, American Musical

Theatre Award.

## Brendon Fox (Associate Director)

THE OLD GLOBE: *Sky Girls*, *Much Ado About Nothing*, *Beyond Therapy*, *An Infinite Ache*, *The SantaLand Diaries*, *The Countess*, *Private Eyes*. With The Old Globe/University of San Diego Professional Actor Training Program: *Sir Patient Fancy*, *Getting Married*. REGIONAL: *Candida*, Malibu Stage Company; *The Smell of the Kill*, North Coast Rep; *The Pavilion*, Merrimack Rep; *Arms and the Man*, Alabama Shakespeare Festival; *Much Ado About Nothing*, LA Shakespeare Festival; *Romeo and Juliet*, *The Floatplane Notebooks*, Cape Fear Regional Theatre. ELSEWHERE: *Twelfth Night*, Academy of Classical Acting, The Shakespeare Theatre; New Village Arts; *Much Ado About Nothing*, Borealis Theatre Co; *Arms and the Man*, *Pericles*, greasy joan & co; *Richard II*, Writers Theatre Chicago; *Heartbreak House*, Shaw Chicago; *Don Juan in Hell*, Bailiwick Rep; *A Bright Room Called Day*, *Cloud 9*, Diversionary Theatre; *Sir Patient Fancy*, The Juilliard School. Mr. Fox is the Associate Producer for L.A. TheatreWorks.

## Phil Reno (Musical Director)

Phil currently conducts the Broadway production of the smash hit *The Producers*, which won a record twelve Tony Awards® when it opened on Broadway. Also on Broadway, Phil has conducted *Thou Shalt Not* (music/lyrics by Harry Connick, Jr.), the long-running hit *Cats*, and was musical director and on-stage pianist for Dame Edna. Since its inception in 2002, Phil has been the Musical Director and Conductor of the highly successful "Broadway Under the Stars" concerts in Bryant Park, televised by CBS. National tours include *Joseph...Dreamcoat* (starring Donnie Osmond), *Music of the Night* (world premiere tour), *Starlight Express* and Bob Fosse's *Sweet Charity*. Off-Broadway credits include *A New Brain* at Lincoln Center, *Chess*, *The Diva is Dismissed* at the Public, *Nightmare Alley*, and *A Little Night Music*. Phil is a graduate of the Cincinnati College-Conservatory of Music.

## Lisa LeMay (Associate Musical Director/Conductor)

Internationally, Miss LeMay has been featured in such notable concert halls as the Sydney Opera House, St. Peter's Basilica (Rome), Royal Conservatory (Dublin) and Boston

Symphony Hall. She leads the Locrian Orchestra, which held the honor of providing live music for the International Holiday Dance Classic (Ballroom Dance Competition) at Caesar's Palace in Las Vegas. An accomplished jazz pianist, Miss LeMay has appeared at numerous jazz festivals and has performed with Dizzy Gillespie, Richie Cole, Maiden Voyage (Ann Patterson), Tonight Show Bandleader, Tommy Newsome and Desi Arnaz Jr. Her experiences as Musical Director include work with melodrama, classic and contemporary musicals, recording projects, film scoring, and arranging/conducting for various vocal soloists. She has performed in *Will Rogers' Follies*, *The Sound of Music*, *The Gershwins' Fascinating Rhythm*, *Joseph and the Amazing Technicolor Dreamcoat*, *Applause*, *Pippin* and *Annie* in regional and touring productions. Recent productions include Musical Direction of *Urinetown* (West Coast Regional Premiere) and Musical Direction/Pianist for Theatre in Old Town's new musical, *Too Old for the Chorus, But Not Too Old to Be a Star*. Her solo piano CD, *In a Sentimental Mood*, is a collection of jazz standards and received a rave review from JazzTimes magazine. As a faculty member at both the University of New Hampshire and the University of Arizona, she has taught courses in music production, music technology, jazz, theory and arranging. A resident of Los Angeles, Miss LeMay is a voting member of both NARAS (Grammys) and the Society of Composers and Lyricists, and is a BMI writer. Visit [www.lisalemay.com](http://www.lisalemay.com).

## John Lee Beatty (Scenic Designer)

BROADWAY: *Doubt*, *The Odd Couple*, *Chicago*, *Wonderful Town*, *Dinner at Eight*, *Frankie and Johnny in the Claire de Lune*, *Morning's at Seven*, *Proof*, *Footloose*, *Ivanov*, *The Little Foxes*, *The Last Night of Ballyhoo*, *A Delicate Balance*, *The Heiress*, *Abe Lincoln in Illinois*, *Anna Christie*, *Redwood Curtain*, *The Sisters Rosensweig*, *The Most Happy Fella*, *Penn and Teller* (twice), *Burn This*, *Ain't Misbehavin'* (twice), *Talley's Folly*, *Fifth of July*, *Crimes of the Heart*, *Baby*, *Whoopee*. OFF-BROADWAY: *Sylvia*, *The Substance of Fire*, *Lips Together, Teeth Apart*, *The Road to Mecca*, *Song of Singapore*, *A Life in Theatre*, *The Miss Firecracker Contest*, 29 seasons at Manhattan Theatre Club and Circle Rep, 10 seasons at City Center Encores!. Credits also at major regional theatres, and in film, opera and TV. Recipient of the Tony, Obie, Drama Desk, Outer Critics Circle Awards; member of the

Theatre Hall of Fame. Graduate of Brown University and the Yale School of Drama.

## Robert Morgan Associate Artist (Costume Designer)

THE OLD GLOBE: Since 1977, designed scenery and/or costumes for 35 productions, among them: *Moonlight and Magnolias*, *Vincent in Brixton*, *The Full Monty*, Dr. Seuss' *How the Grinch Stole Christmas!*, *A Midsummer Night's Dream* ('78 & '85), *Macbeth* ('79 & '96), *Twelfth Night* ('83 & '01), *Romeo and Juliet* ('80 & '99), and *King Lear* ('81 & '93). ELSEWHERE: New York, on and off-Broadway; London's West End; Maria Theresa's private theatre at the Schoenbrunn Palace in Vienna; regional theatres across the United States. From 1987-1992, Mr. Morgan served as Director of the Theatre Division at Boston University's School For the Arts. He lives with his wife and four children in Vermont's rural Northeast Kingdom.

## Pat Collins (Lighting Designer)

THE OLD GLOBE: *Twelfth Night*, *Cymbeline*, Dr. Seuss' *How the Grinch Stole Christmas!*. ELSEWHERE: Pat's Broadway credits include *Doubt*, *Sight Unseen*, *Proof*, *A Moon for the Misbegotten*, *A Delicate Balance*, *The Sisters Rosensweig*, *Conversations with My Father*, *The Heidi Chronicles*, *I'm Not Rappaport* (Tony Award), *Execution of Justice* (Drama Desk Award), the original and 1988 revival of *Ain't Misbehavin'*, *Once Upon a Mattress*, *An American Daughter* and many more. Lincoln Center credits include *Third*, *Ten Unknowns*, *Death and the King's Horseman*, *The Threepenny Opera*, *The Floating Lightbulb* and *Measure for Measure*. OFF-BROADWAY: *The Foreigner*, *Doubt*, *Burn This*, *Quartermaine's Terms*, *How I Got That Story* and *A Life in the Theatre*. She has designed lighting at theaters throughout the country, including the Mark Taper Forum, the McCarter Theatre, Berkeley Rep, Seattle Rep, Hartford Stage, Baltimore Center Stage, Long Wharf Theatre, Guthrie Theatre, Goodman Theatre, American Repertory and Actor's Theatre of Louisville. She also designed Wagner's *Ring Cycle* at the Royal Opera House, Covent Garden and over 100 productions for opera companies throughout the world.

## Paul Peterson (Sound Design)

THE OLD GLOBE: *The Prince of L.A.*, *The Lady With All the Answers*, *Moonlight and Magnolias*, *Lobby Hero*, *Misalliance*, *Vincent in Brixton*, *I Just Stopped By to See the Man*, *Fiction*, *Lucky Duck*, *The Intelligent Design of Jenny Chow*, *The Food Chain*, *Two Sisters and a Piano*, *Resurrection Blues*, *Bus Stop*, *Rough Crossing*, *Blue/Orange*, *Time Flies*, *Pentecost*, *Knowing Cairo*, *Loves & Hours*, *Splendour*, *All My Sons*, *Faith Healer*, *Smash*, *An Infinite Ache*, *Compleat Female Stage Beauty*, *Betrayal*, *The SantaLand Diaries*, Dr. Seuss' *How the Grinch Stole Christmas!*, *The Pavilion*, *Enter the Guardsman*, *The Boswell Sisters*, *Vita and Virginia*, *The Countess*, *Crumbs from the Table of Joy*, *Orson's Shadow*, *God's Man in Texas*, *Travels with My Aunt*. ELSEWHERE: Milwaukee Rep, La Jolla Playhouse, Sledgehammer Theatre (Associate Artist), Mo'olelo Performing Arts Company, The Wilma Theatre, L.A. TheatreWorks, San Diego Repertory Theatre, North Coast Rep, Diversionary Theatre, Cape Fear Regional Theatre, Hope Summer Repertory Theatre, Malashock Dance & Company, The University of San Diego, San Diego State University, and the Freud Theatre at UCLA. EDUCATION: BFA in Drama with an emphasis in Technical Design from San Diego State University.

## Leila Knox (Stage Manager)

THE OLD GLOBE: *Himself and Nora*, *Take Me Out*, Dr. Seuss' *How the Grinch Stole Christmas!* ('04), 2004 Summer Shakespeare Festival, *Resurrection Blues*, *Bus Stop*, *Much Ado About Nothing*, *Dirty Blonde*. BROADWAY: *Dirty Blonde*, *Amour*, *One Mo' Time*. REGIONAL: Production Supervisor of the National Tour and West Yorkshire Playhouse productions of *Dirty Blonde*; *Observe the Sons of Ulster*, Lincoln Center; *Mislansky/Zilinsky or Schmucks*, *Red*, *The Memory of Water*, Manhattan Theatre Company; *All My Sons*, *The Mineola Twins*, Roundabout Theatre; *A Madhouse in Goa*, Second Stage; *Twilight*, Los Angeles, 1992, Berkeley Rep; *Alice's Adventures Underground*, *Cabin Pressure*, SITI; *Demonology*, Playwrights Horizons; *The Woman Warrior*, Huntington Theatre and Berkeley Rep; 11 seasons with the Williamstown Theatre Festival. EDUCATION: Ms. Knox is a graduate of Northwestern University.

## Tracy Skoczelas (Assistant Stage Manager)

THE OLD GLOBE: 2005 Summer Shakespeare Festival, *Vincent in Brixton*, *I Just Stopped By to See*

the Man, Dirty Rotten Scoundrels, 2004 Summer Shakespeare Festival, The Food Chain, Two Sisters and a Piano, Bus Stop, Rough Crossing, Much Ado About Nothing, Julius Caesar, Dirty Blonde, Pentecost, Loves & Hours, Oldest Living Confederate Widow Tells All, Splendour, Pericles, All My Sons, Compleat Female Stage Beauty, Betrayal, Smash, Memoir, Dr. Seuss' How the Grinch Stole Christmas! ('01-'04), Twelfth Night, A Midsummer Night's Dream, Henry V, The Trojan Women. EDUCATION: Ms. Skoczelas holds a BFA from the University of North Carolina at Greensboro.



This theater operates under an agreement between the League of Resident Theatres and Actors' Equity Association, the union of professional theater artists in the United States.

**Benjamin Klein**  
 Assistant Director

The Directors are members of the Society of Stage Directors and Choreographers, an independent organization.



GLOBE: *Dirty Rotten Scoundrels* (dir. Benjamin Klein), *Compleat Female Stage Beauty* (dir. Benjamin Klein), *NEW YORK: Dirty Rotten Scoundrels* (dir. Benjamin Klein)



ELSEWHERE: Company Manager  
 This Theatre operates under an Agreement with the Michigan State University Student Theatre Festival. EDUCATION: BFA in

Directing from the University of Michigan. Benjamin currently lives in Woodside (Queens) and hails from Charlotte, NC.

## FOR THIS PRODUCTION— Additional Staff

Assistant Director.....Benjamin Endsley Klein  
 Assistant Scenic Design.....Amanda Stephens  
 Assistant Costume Design.....Shelly Williams  
 Assistant Lighting Design.....Chris Rynne  
 Studio Teacher.....Judy Ridgeway  
 Rehearsal Pianist.....Ron Councill  
 Stage Management Intern.....Marie Natoli

## Understudies

The Grinch.....Ryan Drummond  
 Old Max.....James Vasquez  
 Young Max.....Ryan Drummond  
 Papa Who.....Ron Christopher Jones  
 Mama Who.....Danielle Forsgren  
 Grandpa Seth Who.....Ron Christopher Jones  
 Grandma Who.....Alex Apostolidis

**DID YOU KNOW?**  
 The Old Globe offers  
**4,000**  
 free GRINCH tickets to  
 underserved children  
 each year,



The Old Globe presents  
 Teatro Máscara Mágica's  
 production of  
**LA PASTORELA**  
 By Max Branscomb  
 Directed by William Virchis  
 Dec 4 - Dec 23  
 Cassius Carter Centre Stage

This traditional Christmas story is imaginatively reinvented every year, using both English and Spanish. Filled with hilarious jokes and songs, this pageant will delight the whole family.

**(619) 23-GLOBE (234-5623)**  
[www.TheOldGlobe.org](http://www.TheOldGlobe.org) | GROUP SALES: (619) 237-1947 x2400

# Little Who Ensemble



FRONT: Halle Hoffman (R), Keilani Joy Spahn (W), Celia Tedde (R).  
 REAR: Nathan Wetter (W), Hannah Prater (W), Julianna Rose (R),  
 Maddie Shea Baldwin (W). Not pictured: Austin Michael Potts (R).

# Board of Directors



Thank you for joining us for this wonderful holiday musical, Dr. Seuss' *How the Grinch Stole Christmas!* Now in its eighth consecutive year at the Globe, this has truly become a holiday tradition for families throughout San Diego. This wonderful production comes to us each year from the generosity of our dear friend Audrey Geisel. I'm sure you join me in thanking her for this priceless gift! Both she and *The San Diego Union-Tribune* have been stalwart supporters of this show, and all of San Diego benefits from their support.

As this 70th anniversary year for the Globe draws to a close, it's great to look back and reflect on all of our successes. To top it off, I want to thank all of you for giving us record attendance at our productions this year! In a year where ticket sales in theatres throughout the country are experiencing declines, ours has increased significantly. We have also had a very successful season in which two of our plays have gone to New York, including *Dirty Rotten Scoundrels*, which opened last March, and our most recent, *Chita Rivera: The Dancer's Life*, which debuts in New York this month! 2006 is shaping up to be an equally stellar year!

As you know, The Old Globe succeeds because of people like you! By your continued attendance at our performances and your annual gifts of support, we survive. We couldn't do it without you! We wish for you and your families a very happy and very healthy holiday season!

Sheryl White, Chair,  
Board of Directors

## Board of Directors

### OFFICERS

Sheryl White\*  
Chair

Tim K. Zinn\*  
Vice Chair – Finance

Robert H. Gleason\*  
Vice Chair – Development

Carlos D. Malamud\*  
Vice Chair – Nominating

Kathryn Hattox\*  
Secretary

Sally Furay, R.S.C.J.\*  
Treasurer

### DIRECTORS

Mary Beth Adderley

Joseph Benoit

Charles Brazell

Trina Brown

Deni S. Carpenter

Karen Cohn\*

Valerie S. Cooper

Christopher L. Crockett

Darlene G. Davies

Bruce M. Dunlap

Sue Ebner

Bea Epstein\*

Pam Farr

Victor P. Gálvez

F. George Gilman

Carol Hanson

Ronald Heller, M.D.

Viviana Ibañez

Joseph E. Jessop, Jr.

Katherine Kennedy

Sheila Lipinsky

Timothy A. MacDonald

Susan Major

Arthur Neumann

Robert L. Noble, A.I.A.

Robin Nordhoff

John Rebelo

Sandra Redman

Mike Samson

Kelly Sanders

Tom Sayles

Phyllis Schwartz

Curtis Smith

Nancy A. Spector

Louis G. Spisto\*

Anne C. Taubman

Anthony S. Thornley\*

Dean Thorp

Evelyn Mack Truitt

Patricia Weil

Stewart J. Weissman

Norma Jean "Jake" Yonchak

\*Executive Committee Member

### EMERITUS DIRECTORS

Garet B. Clark

J. Dallas Clark (1913–2005)

Bernard Lipinsky (1914–2001)

Delza Martin (1915–2005)

Patsy Shumway

Harvey P. White

Carolyn Yorston

### HONORARY DIRECTORS

Mrs. Richard C. Adams  
(1912–2005)

Clair Burgener

Mrs. John H. Fox  
(1908–2003)

Audrey Geisel

Paul Harter

Gordon Luce

Dolly Poet

Deborah Szekely

Hon. Pete Wilson



The Old Globe is supported in part by grants from The City of San Diego Commission for Arts and Culture, Chairwoman Pam Slater-Price and The County of San Diego, The James Irvine Foundation, The Shubert Foundation, The National Endowment for the Arts, Weingart-Price Fund at The San Diego Foundation, Mandell Weiss Charitable Trust, and The San Diego Foundation's Arts & Culture Grants Program.

The Old Globe Theatre's 2005 Shakespeare Festival is part of *Shakespeare in American Communities: Shakespeare for a New Generation*, sponsored by the National Endowment for the Arts in cooperation with Arts Midwest.



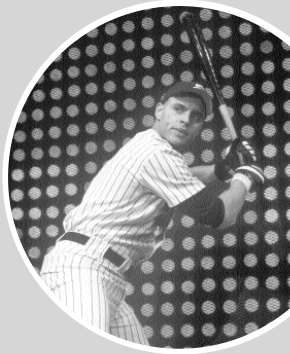


# THE OLD GLOBE

## Broadway's Best and San Diego's Finest... But only with your support!

Producing world-class theatre for San Diego audiences has been The Old Globe's mission for years, but great theatre can only exist with your support. This season, the Globe is producing two more Broadway-bound musical productions for you—our loyal San Diego audience—as well as many other exciting and intriguing plays.

As an added incentive to encourage you to make to make a new gift or to increase your support, The Old Globe and the Cohn Family of Restaurants make a very special one-time offer...



(Top) John Litgow, Nohbat Leo Bitez and Shere Rene Scott in *Dirty Rotten Scoundrels*; Sara Simey and Dan Snook in *Antony and Cleopatra*; Marcy Hameel in *Lucky Duck*; photos by Craig Schwartz; M.D. Walton in *Take Me Out*; photo by Chris Bannion.

# 1

New and current Circle Patrons (\$1,500 & up) who increase their support to the next donor level will receive a \$100 Gift Certificate valid at any Cohn Family of Restaurants including The Prado at Balboa Park. Become a Circle Patron and enjoy complimentary beverages and private restrooms in the Lipinsky Family Suite, exclusively for Circle Patrons, open pre-show and during intermission.

# 2

New and current Gold and Platinum level donors (\$500 to \$1,499) who increase their support to the next donor level will receive a \$50 Gift Certificate valid at any Cohn Family of Restaurants including The Prado at Balboa Park.

# 3

New and current Bronze and Silver level donors (\$125 to \$499) who increase their support to the next donor level will receive a \$25 Gift Certificate valid at any Cohn Family of Restaurants including The Prado at Balboa Park.

Act now and help The Old Globe meet its Annual Fund goal by making or increasing your gift by December 31, 2005. Call (619) 231-1941 x2305, visit [www.TheOldGlobe.org](http://www.TheOldGlobe.org), or stop by Patron Services on the Plaza and ask for information on supporting the Globe and donor benefits.



2005 Premier Restaurant Sponsor

Gift certificates not valid with any other offer or on holidays.

# ENHANCE YOUR THEATRE...



The cast of *Pippin*, photo by Craig Schwartz.



# ...AND YOUR THEATRE



All Lipinsky Family Suite photos by Sandy Haffacker.

To you – and to thousands of other San Diegans –  
The Old Globe is an integral part of your lives  
and provides some of the best Broadway musicals,  
great classics and new plays in the country.

By supporting this great theatre with a Circle Patron  
gift of \$1,500 or more, you not only add to the artistic  
quality of Globe productions but you also can  
take advantage of the many benefits enjoyed by  
Old Globe Circle Patrons, such as...

- \* Unlimited access to the Lipinsky Family Suite,  
The Old Globe VIP Lounge
- \* VIP ticketing and personal service
- \* Invitations to *Meet the Artist* and *Opening Night* events
- \* Backstage Tour opportunities
- \* And much, much more...

Open prior to and during each evening performance,  
the Lipinsky Family Suite offers a full hosted bar,  
a pre-show dinner menu and private restrooms.  
**It's our way of saying thank you for your support.**

FOR MORE INFORMATION CALL  
ASSOCIATE DIRECTOR OF DEVELOPMENT  
MICHELE PROSSER AT (619) 231-1941 x2311.

## SUPPORT THE GLOBE AS A CIRCLE PATRON AND ENJOY BENEFITS INCLUDING THE LIPINSKY FAMILY SUITE.



The Old Globe's ability to maintain the highest standard of excellence, while keeping ticket prices affordable, is due in large part to the annual financial support of nearly 3,500 individuals, businesses, foundations and government agencies. Please join us in giving a warm thanks and recognition to these leaders who have made tonight and many other performances possible. The Old Globe appreciates the support of those who have stepped into the spotlight:

## Benefactors

(\$100,000 and above)

City of San Diego,  
Commission for Arts & Culture  
Audrey S. Geisel/The San Diego  
Foundation Dr. Seuss Fund  
William Randolph Hearst Foundation  
The James Irvine Foundation  
The San Diego Union-Tribune  
Chairwoman Pam Slater-Price  
and the County of San Diego  
The Shubert Foundation

## Season Sponsors

(\$50,000 to \$99,999)

American Express  
Anonymous (1)  
AT&T  
J. Dallas & Mary H. Clark Fund at  
The San Diego Foundation  
Karen & Donald Cohn  
Valerie & Harry Cooper  
Globe Guilders  
The Lipinsky Family  
The Parker Foundation  
(Gerald & Inez Grant Parker)  
Conrad Prebys  
Qualcomm, Inc.  
Sempra Energy  
Donald & Darlene Shiley  
Wells Fargo  
Sheryl & Harvey P. White  
Norma Jean "Jake" Yonchak  
& Todd Figi

## Production Sponsors

(\$25,000 to \$49,999)

Mary Beth Adderley & Richard Wright  
American Airlines  
Bank of America  
Mr. & Mrs. William J. Barkett  
Alan Benaroya  
John A. Berol  
California Bank & Trust  
Cohn Restaurant Group/Prado Restaurant  
Continental Airlines  
County of San Diego  
Kathryn & John Hattox  
HM Electronics, Inc.  
Joan & Irwin Jacobs

National Endowment for the Arts  
Neiman Marcus  
Patrons of the Prado  
Saks Fifth Avenue  
*Shakespeare in American Communities:  
Shakespeare for a New Generation,*  
sponsored by the National Endowment  
for the Arts in cooperation with Arts  
Midwest  
Sheraton San Diego Hotel & Marina  
Target Stores  
Tucker Sadler Architects, Inc.  
Union Bank of California  
Mandell Weiss Charitable Trust

## Director Circle

(\$10,000 to \$24,999)

Anonymous (2)  
Elizabeth M. Adderley  
Charles & Molly Brazell  
The Louis Yager Cantwell  
Private Foundation  
Ken & Deni Carpenter  
Supervisor Greg Cox  
and the County of San Diego  
Darlene G. Davies  
in memory of Lowell Davies  
Mr. & Mrs. Brian Devine  
Bea & Dr. Robert M. Epsten  
Pam & Chuck Farr  
Lee & Frank Goldberg  
Susan & Dr. Ronald Heller  
Dr. & Mrs. Harry F. Hixson, Jr.  
Deni & Jeff Jacobs  
Joseph E. Jessop, Jr.  
Mr. & Mrs. Neil Kjos  
Sue & John Major  
Robert L. Noble, AIA  
Robin & Hank Nordhoff  
Patsy & Forrest Shumway  
Nancy & Alan Spector and Family  
Anne Taubman & David Boyle  
Gillian & Tony Thornley  
Evelyn Mack Truitt  
Carol & Larry Veit  
Christopher & Patricia Weil  
Weingart-Price Fund at  
The San Diego Foundation  
Stewart & Brenda Weissman  
Brent V. Woods & Laurie C. Mitchell  
Carolyn W. Yorston  
Ellen & Tim Zinn

## Founder Circle

(\$5,000 to \$9,999)

The Thomas C. Ackerman Foundation  
Lawrence G. Alldredge & Dawn Moore  
Ken & Ginger Baldwin  
Mr. & Mrs. James W. Bastien  
Cecilia Carrick & Stan Nadel  
Nina & Robert Doede  
Mrs. Danah H. Fayman  
Thompson & Jane Trevor Fetter  
Supervisor Bill Horn  
and the County of San Diego  
Mary Ann & Arnold Ginnow  
Robert Gleason & Marc Matys  
Grosvenor Family Foundation  
Melissa & James Hoffmann  
Carol & George Lattimer  
Bob Martinet & Susan Parkin  
Dr. Marianne McDonald  
Paul I. & Margaret W. Meyer Fund  
at The San Diego Foundation  
Money/Arenz Foundation, Inc.  
Arthur & Marilyn Neumann  
The Kenneth T. &  
Eileen L. Norris Foundation  
Northern Trust Bank  
Allison & Robert Price  
Patti & Mike Rabbitt  
Ellen C. Revelle  
Jeannie & Arthur Rivkin  
The Ariel W. Coggeshall Fund  
at The San Diego Foundation  
Ms. Jeanette Stevens  
Deborah Szekely  
The Thursday Club Foundation  
Erna & Andrew Viterbi  
Pam & Martin Wygod  
June E. Yoder

## Playwright Circle

(\$2,500 to \$4,999)

Dr. & Mrs. Wayne Akeson  
Robert S. Albritton  
Gail, John & Jennifer Andrade  
Mr. & Mrs. Richard Baldwin  
Melissa & Michael Bartell  
Joan & Jeremy Berg  
City of Chula Vista Office of Cultural Arts  
Garet & Wendy Clark  
The Colwell Family Fund

For more information on becoming a donor to The Old Globe, please contact Michele Prosser at (619) 231-1941 x2311 or visit us online at [www.TheOldGlobe.org](http://www.TheOldGlobe.org).

# Annual Fund Donors

Ms. Heidi Conlan/  
The Sahan Daywi Foundation  
John & Ann Davies  
Bernard J. Eggertsen & Florence Nemkov  
Susanna & Michael Flaster  
Samuel I. & John Henry Fox Foundation  
Millicent & Charles Froehlich  
Martha & George Gafford  
Madeline L. & Milton D. Goldberg  
Family Foundation  
Dr. & Mrs. William Gott  
Fred & Alicia Hallett  
Tish & Jere Horsley  
Mary & Russell Johnson  
Dr. & Mrs. Richard L. Kahler  
Bob & Gladys King  
Dr. Ronald & Mrs. Ruth Leonardi  
Peter & Inge Manes  
Judy & George Miller  
Drs. Francis & Patricia Montalbano  
Harle Garth Montgomery  
Coralee Ann Morris  
David & Noreen Mulliken  
Tim & Leslie Paul  
Dolly & Jim Poet  
Mr. & Mrs. Matthew Pollack  
Pratt Memorial Fund  
James S. & Kalpana Rhodes  
Jay & Diane Sweeney  
Marilyn Elizabeth Thompson  
Dixie & Ken Unruh  
Pamela J. Wagner  
Robert Young

## Craig Noel Circle

(\$1,500 to \$2,499)

Mrs. Mary Thomas Adams\*  
Richard Adesso  
Anonymous (2)  
Mr. & Mrs. John E. Barbey, Jr.  
Diana Barliant & Nowell Wisch  
Dr. C. K. Barta & Inge Lehman  
Drs. John & Karen Berger  
Teresa & Tom Bernard  
Sally & John Berry  
Charles & Charlotte Bird  
Paul Black  
Mary Ann Blair  
Cynthia Bolker & Greg Rizzi  
William & Janice Bopp  
Robert & Lillie Breitbard Foundation  
BRG Consulting  
Arthur & Sophie Brody  
Clint & Susie Burdett  
Dr. & Mrs. Robert M. Callicott  
Ruth Mary Campbell  
Dr. & Mrs. Edgar D. Canada  
Pamela & Jerry Cesak  
Carol & Rudy Cesena  
Carol & Jeff Chang  
R. Patrick & Sharon Connell  
Dr. Roger C. Cornell  
Richard & Stephanie Coutts

Susan B. Cowell  
Sally & Pat Crahan  
Dr. & Mrs. Francis C. Cushing, Jr.  
Mrs. Gail Powell Davis  
Pat & Dan Derbes  
Dean & Mrs. M.H. Dessent  
Mrs. Philip H. Dickinson  
Jim & Sally Ditto  
Marion Eggertsen  
Noddy & Ira Epstein  
Mr. & Mrs. Ronald C. Erbetta  
Mark Faber  
Carol Fink  
Dieter & Susan Fischer/  
Dieter's Mercedes Service  
Dr. & Mrs. George Flint  
Karen & Orrin Gabsch  
Mrs. Deede Gales  
Galison Family Foundation  
of the Jewish Community Foundation  
Barbara & Albert Garlinghouse  
Bill & Judy Garrett  
Drs. Thomas H. & Jane D. Gawronski  
Mr. & Mrs. Daniel Genis  
Teresa C. George  
Nancy Reed Gibson  
Martin & Enid Gleich  
Ms. Cheryl Haimsohn  
Drs. Patrick Harrison & Eleanor Lynch  
Dr. & Mrs. Peter K. Hellwig  
Maria & Michael Herman  
Rhonda Heth & Tom Mabie  
Alexa Kirkwood Hirsch  
Leonard & Elaine Hirsch  
Dr. David K. Hostetler  
Mr. & Mrs. Gary R. Huckell  
Richard & Janet Hunter  
Doug & Gail Hutcheson  
Alfred & Pat JaCoby  
William W. Karatz  
Katleman Family Fund  
of the Jewish Community Foundation  
William & Edythe Kenton  
Mr. & Mrs. Irving J. Kern  
Jo Ann Kilty  
Ken & Sheryl King  
Dr. Fritz Klein  
James Klein Insurance  
Kerri Klein & Mark Weiser  
Dr. Ara & Sosi Klijian  
Brooke & Dan Koehler  
Phyllis & Martin Kornfeld  
Rosalie Kostanzer  
Bob & Laura Kyle  
William Ladd & Anita Busquets  
Mr. & Mrs. Richard S. Ledford  
Terry & Mary Lehr  
Ms. Sherrill Leist  
James & Pamela Lester  
Jerry Lester, M.D./Rosarito, Mexico  
Mr. & Mrs. Paul Levin  
Sandy & Arthur Levinson  
Elsa & Jerry Lewis  
Mrs. Thelma Lindblade

Kitty Lombardo  
Mr. Robert E. Mackey, Jr.  
Barbara J. Malk  
Merriel Mandell  
Charlie & Jackie Mann  
R.J. Maus, Architects  
Nancy McCune  
Bill & Jeri McGaw  
Josie Rios McGuffey & A.T. McGuffey  
Elizabeth & Edward McIntyre  
Ethel Merriman Realtor  
Elizabeth Meyer  
Joel & Deirdre Mick  
Estelle & Jim Milch  
Rena Minisi & Rich Paul  
Judith & Neil Morgan  
James & Nancy Mullen  
Ruth & Jim Mulvaney  
Bette Nagelberg  
Josiah & Rita Neeper  
Charles Noell & Barbara Voss  
Marcia & Jim Piper  
Martha Meade Pitzer  
Mo & Bill Popp  
Dr. & Mrs. Daniel Porte  
Joanne Powers  
Jim & Claudia Prescott  
RAdm. Arthur & Peggy Price, Jr.  
Michael & Cheryl Price  
Brenda Marsh-Rebelo & John Rebelo  
Roger & Christine Roberts  
Nancy Robertson  
Warren & Beverly Sanborn  
Susan & Edward Sanderson  
Margery P. Schneider  
Drs. Joseph & Gloria Shurman  
Roberta J. Simpson  
Dotti & Joel Sollender  
Nancy Steinhart & Rebecca Goodpasture  
Eugene L. & Hannah Step  
Marc R. Tarasuck, AIA  
The Tarlov Family  
Mr. & Mrs. Charles Taubman  
Mrs. Claire Tavares  
Cherie Halladay Tirschwell  
Carol Vassiliadis  
Doris & Lou Vettese  
Jordine & Harvey Von Wantoch  
Merle & Phil Wahl  
John\* & Christy Walton  
WD-40 Company  
Jan Harden Webster & Raul Ortega  
Shirli Fabri Weiss  
Michael & Penny Wilkes  
Betty Jo & Hal Williams  
Omar & Carol Winter  
Brad Young  
Helene & Allan Ziman  
Allan & Bev Zukor

\*Deceased

## Platinum

(\$1,000 to \$1,499)

In Memory of Charles R. Allen  
Ronda & Stanley Breitbard  
Mr. & Mrs. Blaine A. Briggs  
Conrad & Christa Burke Fund  
at The San Diego Foundation  
Judy & Tom Carter  
Sandra & Harry Carter  
Celeste & Steven Cowell  
Mrs. Gigi Cramer  
Sue K. & Charles C. Edwards, M.D.  
Richard & Donna Ferrier  
Mary & David Fitz  
Hal & Pam Fuson  
William C. Gabrielson  
Mark & Hanna Gleiberman  
Sandra Gulden & Leon J. Goldberger  
Gulden Private Foundation  
Alex & Mary Hart  
Salah M. Hassanein  
Dr. & Mrs. James E. Lasry  
Matthew R. Lehman  
Loonin Family Fund  
Mr. Calvin Manning  
John & Marcia Price Family Foundation  
William & Susane Roberts  
Ruth Whitney Robinson  
Thomas Rohanlon  
Don & Darlene Russell  
Gloria Penner Snyder & Bill Snyder  
Robert H. Stickel  
Mrs. John R. Stitt  
Eileen Tiel  
Celeste & Gene Trepte  
U.S. Consulate, Tijuana

## Gold

(\$500 to \$999)

Anonymous (3)  
Charles & Susan Avery  
Mr. & Mrs. David A. Baer  
Ms. Carol L. Baldi  
Mrs. Ina S. Bartell  
Richard & Linda Basinger  
Judy & Larry Belinsky  
Lee & Amnon Ben-Yehuda  
Nicholas B. Binkley  
Dennis & Michele Black  
Robert & Nancy Blayney  
Joyce & Robert Blumberg  
Bockoff Family Foundation Fund  
at The San Diego Foundation  
Mrs. Suzanne I. Bond  
H.L. & Irene Boschken  
Mrs. Henri Brandais  
Loretta Cass  
Harry & Carol Cebron  
Choice 2000  
Doug & Elisabeth Clark  
Sue & Keith Colestock  
Arthur J. Collingsworth  
Mike Conley & Sue Steele

Steve & Carolyn Conner  
Jane Cowgill  
Dr. & Mrs. William Davidson  
Dr. & Mrs. William R. Dito  
DO or DICE  
In Memory of Edith Dolnick  
Silvia Dreyfuss/LABS, Inc.  
Joanne Dunn  
In Memory of  
Richard & Elaine Fechheimer  
Dr. Susan Fee  
Esther & Robert Feier  
Ms. Pat Frost  
Fred & Joy Frye  
Arthur & Judy Getis  
The Golemb Family  
Drs. Leonard & Barbara Gosink  
Grady & Associates Attorneys at Law  
Dr. & Mrs. Don Graham  
Pamela L. Graven  
Carol & Don Green  
Ed & Frances Grimes  
Thomas M. Henry  
Arnie & Barbara Hess  
Mr. & Mrs. Thomas O. Hippie  
Terry & Peter Holt  
Jean E. Holtz  
Mrs. Elsie M. Hooper  
Mr. Stephen Hopkins  
Margot Reinke Humphreys  
Susan D. Inot  
Drs. Andrew & Sonia Israel  
Mr. & Mrs. Gary Jacobs  
Dr. Eric & Susan Johnson  
Kathy & Rob Jones  
Judge Anthony C. & Joyce Joseph  
Charles & Gail Kendall  
Joanna & Lloyd Kendall  
Dr. L. Michael Kettel  
Mr. & Mrs. Kevin Kiernan  
Curt & Nancy Koch  
John Q. Lalas, Jr.  
Dr. Eric Lasley  
Richard C. Levi  
Mr. & Mrs. James Lim  
Don & Mary Jane Lincoln  
Donald C. Lipkis & Arlene Pollard  
Sandy & Ernie Lippe, D.D.S.  
Mark C. Lorenzo  
Dr. & Mrs. Leeland M. Lovaas  
Dr. David Lynn  
Ed & Nancy Lyon  
M & S Ponds & Supplies  
Ms. Jo Bobbie MacConnell  
Dr. Carl Maguire & Margaret Sheehan  
Dr. Robert & Marcia Malkus  
Ron & Mercy Mandelbaum  
F. Dale & Lois Marriott  
Christopher J. Maxin &  
Stephanie Buttell-Maxin  
Valorie McClelland  
Susan & David McColl  
Jonathan McCue

Dr. & Mrs. M. Joseph McGreevy  
Mr. & Mrs. William McKenzie  
Harold O. McNeil, Esq.  
Drs. John Meyers & Betty Joan Maly  
Dr. Ronald H. Miller  
Akiko Charlene Morimoto  
Susan & Charles Muha  
Katherine Newton  
Willene D. Nichols  
Rod & Barbara Orth  
Susan Parker  
William & Sandy Peavey  
Mrs. Margaret F. Peninger  
Deborah Brooks Petry  
Mr. & Mrs. Thomas Pierce  
Dick & Rosemary Pinney  
Dr. Ken Pischel & Dr. Katherine Ozanich  
Lisa Powell  
Dr. Julie Prazich & Dr. Sara Rosenthal  
Don & Marie Prisby  
Eileen Prisby  
Mary & Kedar Pyatt  
Jeffrey & Vivien Ressler  
David Rickert  
Stuart & Linda Robinson  
Dr. H. Warren Ross  
Dr. Joseph & Carol Sabatini  
Phoebe & David Sackett  
Dr. & Mrs. Roger H. Schmitt  
Marilies Schoepflin, PhD.  
Richard Shapiro & Marsha Janger  
Alex V. Sher  
Ken Sherborne  
Dee E. Silver, M.D.  
Alan & Esther Siman  
Susan Sincoff & Dr. Joseph Yedid  
Rodney & Dolores Smith  
Herbert & Elene Solomon  
Ann & Robert Steiner  
Gwen Stoughton  
Eric Leighton Swenson  
Charles B. Tesar, M.D.  
Margo Thomas  
Janet & Bernard Trabin  
William & Cynthia Tuckerman  
Lawrence P. Urbonas  
Will & Vanessa Van Loben Sels  
Natalie C. Venezia & Paul A. Sager  
Kenneth & Lorelei Warburton  
Zona Weekly  
Mr. & Mrs. David Weinrieb  
Janis Wellberg  
Angela Whiteley  
Dennis & Carol Wilson  
Keith J. Wong  
Mr. & Mrs. C.E. Wylie/  
C.E. Wylie Construction Company

## Silver

(\$250 to \$499)

Michael Albo  
Alfred Aburto & Carol Parker

# Annual Fund Donors

Mr. Gale Acker & Dr. Nancy Acker  
Susan Adams  
Sybil & B.J. Adelson  
George Amerault  
Anonymous (6)  
Drs. Michael & Gabriela Antos  
Charles Arthur  
Mike & Rhoda Auer  
Roswell & Patricia Austin  
Mark & Tina Bachman  
John Randolph Backman, M.D. &  
Carolyn Darrow  
John & Elizabeth Bagby  
Robert Baily  
Lewis & Lynne Baker  
Shawn & Jennifer Baker  
Sharon & Bill Beamer  
Warren & Inez Bellows  
Karlene Knieps Bergold  
Lanie & Lazare F. Bernhard  
John Biggs  
Perry S. Binder, M.D.  
Mr. & Mrs. Stanley Birstein  
Drs. Gordon & Karen Bishop  
Robert D. Blanton & Ann Clark  
Ms. Sheila M. Bobenhouse &  
Mr. Jeffrey C. Truesdell  
Mark A. Botta  
Dr. James Lewis Bowers  
Todd & Margaret Bradley  
Marge & Hugh Bradner  
Wyloma Bradshaw-Samuels  
Janis & Michael Brams  
In Honor of Deem Bristow  
Ms. Beverly A. Bromley  
Ed Brookins  
Ms. Julia Brooks-Gorman  
Mr. & Mrs. Hal W. Brown  
Sarah Blakely Brown  
Dr. & Mrs. Simon C. Brumbaugh, Jr.  
Bob Buchner/Marie Buckey  
Linda Burgum-Sunkel  
David Burns & Diane Lischio  
John & Kirk Butler  
Stuart & Joanne Butler  
Beth & Tim Cann  
Ralph & Gwen Carrier  
Jane Carrigan  
William & Shirley Carrington  
Ellen Casey  
Shlomo & Leslie Caspi  
Luc & Annemarie Cayet-Pleska  
Ray & Shelley Chalupsky  
Charlene Chatham & Wm. Price  
Dr. & Mrs. Alberto Chavira  
Elaine & Peter Chortek  
Mr. & Mrs. Henry B. Clark, Jr.  
Mr. & Mrs. Owen Clinton  
Benjamin Coll  
Alan L. & Frances E. Cornell  
Ronald D. Culbertson  
Kevin & Christine Dahlke

James & Kristen Dalessio  
Dewey & Cindy Dasher  
Susan Davey  
John Wm. Davis & William M. Hughes  
Mr. & Mrs. William Deatruck  
Janice DeMund  
Dutch & Dawn Dershem  
Capt. & Mrs. J. King Deutsch, USN Ret.  
Don & Frances Diehl  
Eugene Diskin  
Dr. & Mrs. Donald B. Dose  
Patricia & Glen Doughty  
Lizbeth Ecke & David Meyer  
Roberta & Stephen Edelstein  
Ron Eisenberg  
Judge & Mrs. Harry Elias  
Peggy Elliott  
Peter & Doris Ellsworth  
James & Mary Ann Emerson  
Dan & Phyllis Epstein  
Diane Espinosa  
Donald & Patricia Falkner  
Mary Jo Fetters  
Dr. & Mrs. Frank B. Flint  
Ms. Donna J. Flor & Mr. R. Kirk Keel  
Foley & Associates  
Mr. & Mrs. Rob Foley  
Larry & Jan Ford  
Larry Forsyth  
Lee Forte/J. Narvid  
Dr. & Mrs. Paul Friedman  
Dr. Richard & Randee Friedman  
Natacha Furlan  
Charles & Jeanne Gahagan  
Kathleen Garcia  
Mr. David N. Garrison &  
Mr. David M. Pierce  
Gaspere Trust  
Thomas Gass, D.D.S.  
Mr. & Mrs. Robert J. Gawlowski  
Norman & Patricia Gillespie  
Dr. & Mrs. Michael Goldbaum  
Carole & Howard Goldfeder  
Deni D. Goodman  
Louise & Doug Goodman  
Drs. Thomas & Cynthia Goodman  
Robert & Edry Goot  
Ms. Cindy Gordon  
Mr. John C. Gray &  
Mrs. AnneMarie Kaiser  
Arthur A. Greenberg  
Mr. George Guerra  
Dr. A.T. Hagler & Mrs. Martha Obermeier  
Deborah A. Hammond  
Robert W. & Helen M. Hammond  
Robert M. & Helen M. Hansen  
Linda Hanson  
C. Harbordt  
Mr. & Mrs. James Harris  
Elizabeth Raines Harrop  
Fritz & Jeannine Healey  
Cdr. Rodney & Michele Hearn

Lynne & Stephen Heidel  
Dr. Charles & Joan Henkelmann  
Lawrence & Suzanne Hess  
Donald J. Hickey  
Paul & Anne Hofflund  
John & Jean Hoffner  
John & Peggy Holl  
Paul & Barbara Holz  
Nancy & Bill Homeyer  
Bonnie & Cecil Hornbeck  
Kendyl & Merri Houdyshell  
Steven & Nancy Howard  
Bettina J. Huber  
Stephanie & Carl Hurst  
Joseph & Donna Hynes  
Mr. & Mrs. Joseph & Eileen Innecken  
ISEC, Inc.  
Mr. & Mrs. David Ives  
Mr. & Mrs. Bill James  
Nancy & David James  
Edward & Linda Janon  
Mike & Paula Jantz  
Richard & Katherine Jarvis  
In Memory of Donald Jenkins  
Neil & Sonya Johnson  
Kenneth & Catherine Jones  
Kenneth & Marilyn Jones  
Dr. & Mrs. James Justeson  
William P. & Nancy Moffatt Kane  
Andrew & Denise Kaplan  
Pete & Terry Katz  
Miriam & Jerome Katzin  
Gale Kavanaugh  
Patricia & Alexander Kelley  
Jennifer Kent  
Kathleen Kim & Zachary Rattner  
Mark & Kelly Kjos  
Thomas & Dianne Klauda  
Mr. & Mrs. John & Carmen Kline  
Louis J. Knobbe  
Jo Ann & Lee Knutson  
Bill & Linda Kolb  
Steven & Lisa Kradjian  
Mr. & Mrs. Jay Kranzler  
Leona & Larry Krevat  
Marvin M. Kripps, M.D.  
Lou Krueger  
Betty & Richard Kuhn  
Adrian & Elaine Kuyper  
Janet & Dan La Marche  
Vic & Mary Landa  
Jillana Lashmet  
Elizabeth Lasley  
Dixon & Pat Lee  
Tom & Terry Lewis  
The Linkery  
Sally & Bill Luster  
Jerry & Beverly Lynn  
Brian C. Malk & Nancy H. Heitel Fund at  
The San Diego Foundation  
Jeanne Maltese  
Judge & Mrs. Frederick Mandabach

Mr. & Mrs. Norman Mann  
Cathie Marsh  
Douglas T. Martin  
Harold & Beverly Martyn  
Joanne D. Marugg  
Cdr. & Mrs. John C. Mathews III  
Diana McCarthy  
Ronald McCaskill & Robyn Rogers  
Virgina McClintock  
Valli & Tom McDougle  
Teresa McEuen  
Steve McIntee & Robert Meinz  
Cynthia McIntyre  
Dan McLeod  
Mr. & Mrs. David McNair  
Mr. & Mrs. Jim Melcher  
Joyce & Bill Mellos  
Dr. & Mrs. Robert Meredith  
James & Dorothy Mildice  
Mr. & Mrs. James Milligan  
Joel, Annette & Arianna Millman  
Stan & Phyllis Minick  
Margaret Mitchell  
Mark Morel  
Susan Morgan  
Michael Morris  
Muriel G. Morrison  
Charlotte Moskovitz  
Pat & Barbara Moss  
Mary Jo Murphy  
Maggie & Wayne Myers  
Richa Nand  
Dr. & Mrs. James H. Nelson  
Tom & Doris Neuman  
Nicholas & Louise Nicoloff  
Stephen B. Nielander &  
Dominique K. Alessio  
Charlotte Nielsen  
Gwen & Dr. Mike Nobil  
Gary & Gail Nordstrom  
Fred & Susan Oliver  
Floyd T. Olson  
David & Jeanette Osias  
Mr. & Mrs. Jean-Louis Paroz  
Dennis Pennell  
Clifford T. Pentrack &  
Mary E. Giovaniello  
Marion D. Perlman  
Drs. Mark & Darcey Perlman  
Anthony Perricone  
Lawrence Roy Perrin  
Mr. & Mrs. David J. Pettitt  
Darrell C. Pope & Dov Marocco  
Mr. A.W. Prichard  
Barbara Pricola  
Dr. Alex & Eileen Pue  
Martha Susan Quinn  
Anne Ratner Fund of the  
Jewish Community Foundation  
Shirley & Emanuel Ravet  
Mr. & Mrs. Leslie D. Reed  
Mr. H.E. Reichert  
Dr. Richard Reid

Robert T. Reid  
Mr. & Mrs. Daniel Reinfeld and Family  
Andrew Ries, M.D. &  
Vivian Reznik, M.D.  
Tim Ringland  
Mark & Lisa Robillard  
Mr. & Mrs. Brent Robinson  
Isabella & Jody Rogers  
Lois S. Roon  
Gerald & Ruth Rosenbaum  
Ursula R. Roth  
Dr. Norman & Barbara Rozansky  
Mr. Joseph Rusche  
Peter & Donna Russell  
Fran & Tom Ryan  
George & Karen Sachs  
Dr. Peter & Arlene Sacks  
Samiljan Family Fund of the  
Jewish Community Foundation  
Barbara A. Sawrey  
Simon & Ruth Sayre  
Terry & Carol Schaefer  
RAdm. & Mrs. H. James T. Sears  
Linda J. Seifert  
Bernard R. Senick  
Lori Severson & Eric Longstreet  
Georgina & Lu Sham  
Prof. K. Barry & Jan Sharpless  
Tom & Vivian Shive  
Sandy & Stella Shvil  
Kevin Silke  
Jerry & Beth Silverman  
Dr. Eunice M. Simmons  
Anne & Ronald Simon  
Christine Skoczek  
Terrence & Kathryn Slavin  
Tom Sowers  
Dr. & Mrs. Bradley Spitz  
Steven & Carol Stachwick  
Mr. & Mrs. Fred C. Stalder  
Susan I. Steele  
Deborah & Hilton Stemwedel  
Dr. Craig & Debbie Stevenson  
Edward Stickgold & Steven Cande  
Mr. & Mrs. Avery Stone  
Karen & Michael Stone  
Helga & Sam Strong  
John P. Studarus  
Abbe Wolfsheimer Stutz  
Ron & Susan Styn  
Mrs. J.B. Swedelius  
Clifford & Kay Sweet  
Drs. Paul Sylvan & Ellen Heyneman  
Diana P. Syvertson  
Franklin & Phyllis Tabor  
Dr. Blake S. & Mrs. Peggy Jean Talbot  
Dr. Terry & Naomi Tanaka  
Elliot & Lynn Tarson  
Jim & Sally Taylor  
Dr. Marshall & Leila Taylor  
Steven & Anoush Tencati  
Don Terwilliger  
Judge & Mrs. David R. Thompson

Robert C. & Melesse W. Traylor  
Iwona A. Trybus  
Jack Tygett & Joyce Shoemaker  
Mr. & Mrs. Stan Ulrich  
Ginny Unanue  
Village Nurseries/Jason Dworman  
Hobart & Violet Wagener  
Donald & Ann Walker  
Kathy & Jim Waring  
Pitt & Virginia Warner  
David P. Watry  
Pat & Allen Weckerly  
Janice L. Weinrick  
Ms. Margaret Wells  
Mr. & Mrs. James D. Welterlen  
Pat & Bob Whalen  
Hal M. White  
Ross & Barbara White  
Mr. & Mrs. Patrick N. Whitney  
Mark & Ann Wiczorek  
Loreen & Roland Wilhelmy  
Carol & Martin Wilson  
Ron & Beverly Wilson  
The Wine Lover  
Cass Witkowski Family  
Mr. & Mrs. John W. Witt  
Dr. Perri L. Wittgrove  
Mr. & Mrs. H.D. Wolpert  
Dr. Dolores Wozniak  
Kaye I. Wynne  
Sandra Zarcades  
Alan R. Zeleznikar  
Zensei Sushi  
Mr. & Mrs. David Zimmerman, Jr.  
Vicky Zollweg & Michael Dunteman

*This list is current as of October 13, 2005*

**To learn more about supporting  
The Old Globe's artistic excellence and  
community outreach programs, please  
visit our website at  
[www.TheOldGlobe.org](http://www.TheOldGlobe.org) or call  
(619) 231-1941 x2305.**

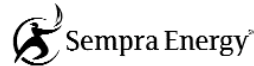
# Special Thanks to Our Corporate Sponsors

## CORPORATE LEADERS \$25,000 AND ABOVE

AmericanAirlines®



SAKS FIFTH AVENUE



### CORPORATE DONORS (\$2,500 to \$24,999)

Ashworth, Blanchet, Christenson,  
Kalemkiarian  
Break-Away Tours  
Citigroup Foundation/Smith Barney  
Classic Party Rentals  
Cush Automotive  
Charitable Foundation  
Evans Hotels  
Fifth & Hawthorn  
Fleishman-Hillard  
Wayne Foster Entertainment

Goldman Ferguson Partners  
Higgs, Fletcher & Mack, LLP  
Home Bank of California  
KPMG, LLP  
Mercer Health & Benefits  
Mission Federal Credit Union  
Nokia  
Nordstrom  
Northern Trust Bank  
OVATION - The Arts Network  
Pfizer  
Relocation Coordinates  
ResMed Foundation

San Diego Chargers  
San Diego National Bank  
Science Applications International  
Corporation  
Seltzer Caplan McMahon Vitek  
Skyy Vodka  
Starbucks  
Stewart Title of California  
Time Warner Cable  
TK&A Custom Catering  
U.S. Bank  
The Westgate Hotel  
XLNC1

Corporate Partners enjoy exclusive benefits and recognition, especially the opportunity to entertain clients and employees with exclusive receptions in our Patron and Lipinsky Family Suites, behind-the-scenes tours, and preferred seating at our shows. For information, please contact Chris Graham at (619)231-1941, x2308.

**National Corporate Theatre Fund** is a non-profit corporation created to increase and strengthen support from the business community for eleven of this country's most distinguished professional theatres. The following foundations, individuals and corporations support these theatres through their contributions of \$10,000 or more to National Corporate Theatre Fund:

#### Benefactors (\$20,000 & Above)

Altria Group, Inc.  
American Express Company  
Broad Street, Inc.  
Citigroup  
Ernst & Young  
KPMG  
Marsh & McLennan Companies, Inc.  
Praxis Media/Palace Production  
Center/Rabbit Ears Entertainment  
Verizon

#### Pacesetters (\$15,000 to \$19,999)

Bank of America  
Cisco Systems  
Estee Lauder Companies, Inc.  
Goldman, Sachs & Company  
JP Morgan Chase  
Merrill Lynch & Co.  
Morgan Stanley  
UBS

#### Donors (\$10,000 to \$14,999)

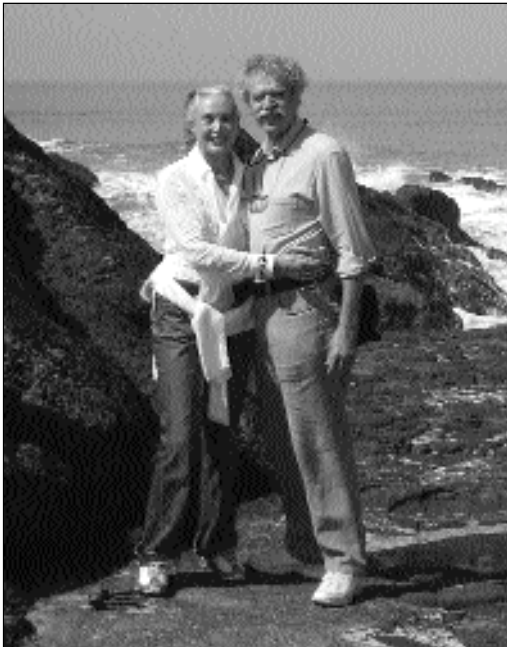
Baruch College  
Bingham McCutchen  
Credit Suisse First Boston  
Deloitte & Touche  
Dorsey & Whitney LLP  
Mayer, Brown, Rowe & Maw LLP  
Metlife Foundation  
Pfizer, Inc.  
Sidley Austin Brown and Wood LLP  
Skadden, Arps, Slate, Meagher & Flom LLP  
Wilke, Farr & Gallagher LLP





# THE CRAIG NOEL LEAGUE

*Paving a Bright Future for The Old Globe  
Through Planned Gifts*



BRENDA MARSH-REBELO AND JOHN REBELO

John Rebelo and Brenda Marsh-Rebelo have been longtime members of the Globe's extended family. The two have been subscribers and contributors to the Theatre for over 25 years, and John is currently a member of the Globe's Board of Directors. They have fond memories of first attending the Globe. For Brenda, who was raised in London, she was thrilled to learn in 1981 that "little San Diego" offered such excellent theatre. John has always found the setting of The Old Globe in beautiful Balboa Park to be magical, and the two count the Globe as a true treasure of the community.

John and Brenda enjoy the diversity of productions offered at the Globe each year. "They make you think," notes John, and the couple finds their evenings with friends at the Globe to be "time very well spent."

The Rebelos have included The Old Globe in their estate plan. "We chose to become members of the Craig Noel League to play a small part in assisting the Globe to achieve its financial goals for the future. The Old Globe has given us great joy over the years, and we feel that it is our time to give something back."

Brenda's hopes for the Globe's future include expanded education programming "to touch the lives of San Diego's children, not only increasing their exposure to the arts, but to realize through the plays they will witness the variety of paths their own lives may take, and how carefully one must choose the paths he or she wishes to travel." The Old Globe extends its sincere thanks to Brenda Marsh-Rebelo and John Rebelo for helping to pave a bright future for The Old Globe.

Many thoughtful friends are helping to secure The Old Globe's future by leaving gifts in their wills and estate plans. We hope you might also be so moved to join them in helping to sustain the theatrical excellence of The Old Globe for years to come. We'd love to hear from you, so that we might recognize your generosity and thoughtfulness through membership in the Craig Noel League, our planned giving society. For information on leaving a lasting gift to the Globe, or to speak with one of our estate advisors, please contact Brad Ballard at (619) 231-1941 x2309 or via e-mail at [plannedgiving@TheOldGlobe.org](mailto:plannedgiving@TheOldGlobe.org).



CRAIG NOEL, Founding Director

During Craig Noel's distinguished 67-year career with The Old Globe, the much-honored director has staged over 225 productions of all styles and periods. Craig has been associated with The Old Globe since its community-theatre inception in 1937 when he made his debut as an actor. Two years later he accepted his first directorial assignments, staging four of the season's seven productions.

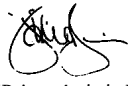
Since then, Craig has guided the organization through its metamorphosis from a community theatre of the highest standards to one of the nation's most successful not-for profit theatres. In doing so, he has enriched the quality of life in San Diego for generations of citizens who have become today's theatre-goers and arts supporters.

# Associate Artists OF THE OLD GLOBE

In recognition of their unique contribution to the growth of The Old Globe and their special talent, we take great pride and pleasure in acknowledging as ASSOCIATE ARTISTS OF THE OLD GLOBE, the following who have repeatedly demonstrated by their active presence on our stages and in our shops, that wherever else they may work, they remain the heart and soul of this theatre.



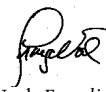
Louis G. Spiste, Executive Director



Jack O'Brien, Artistic Director



Jerry Patch, Resident Artistic Director



Craig Noel, Founding Director

William Anton  
Jacqueline Brookes  
Lewis Brown  
Kandis Chappell  
George Deloy  
Tim Donoghue  
Richard Easton

Tovah Feldshuh  
Monique Fowler  
Ralph Funicello  
Lillian Garrett-Groag  
Harry Groener  
A.R. Gurney  
Joseph Hardy

Mark Harelik  
Bob James  
Tom Lacy  
Diana Maddox  
Dakin Matthews  
Deborah May  
Katherine McGrath

John McLain  
Jonathan McMurtry  
Stephen Metcalfe  
Robert Morgan  
Steve Rankin  
Robin Pearson Rose  
Marion Ross

Steven Rubin  
Ken Ruta  
Douglas W. Schmidt  
Seret Scott  
David F. Segal  
Don Sparks  
David Ogden Stiers

Conrad Susa  
Deborah Taylor  
Sada Thompson  
Paxton Whitehead  
James R. Winker  
Robert Wojewodski

## PATRON INFORMATION

### TICKET SERVICES

#### HOURS

Monday: noon – 6pm

Tuesday through Sunday: noon – last curtain

Hours subject to change. Please call ahead.

**PHONE** (619) 23-GLOBE or (619) 234-5623

**FAX** (619) 231-6752

**EMAIL** Tickets@TheOldGlobe.org

### ADMINISTRATION

**HOURS** Monday – Friday: 9am – 5pm

**PHONE** (619) 231-1941

**WEBSITE** www.TheOldGlobe.org

**ADDRESS** The Old Globe

P.O. Box 122171

San Diego, CA 92112-2171

### ORDERING TICKETS / CHANGE OF ADDRESS

The Old Globe accepts Visa, Discover, MasterCard, or American Express. Phone orders for non-subscribers are subject to a \$3 per ticket service charge, not to exceed \$12. Ticket exchanges are subject to a service charge for non-subscribers. If you have moved, please notify the Ticket Services Office to update our records. Call (619) 234-5623 during Ticket Services hours, mail your change of address to the Ticket Services Office, or email us at Tickets@TheOldGlobe.org.

### UNABLE TO ATTEND?

If you find you are unable to use your tickets, please give them to a friend, or turn them in to the Ticket Services Office and receive a tax receipt for your donation. Tickets must be received by show time.

**Ricola Cough Drops are available upon request. Please ask an Usher.**

### RESTROOMS AND TELEPHONES

Restrooms are located in the lower lobby of the Old Globe Theatre and adjacent to the Festival Theatre; pay phones may be found in the lower Globe Theatre lobby and next to the Gift Shop.

### SEATING OF LATECOMERS

Although we understand parking is often at a premium, the seating of latecomers is extremely disruptive. Latecomers may be given alternative seating and will be seated at an appropriate interval.

### YOUNG CHILDREN

Children under age three will not be permitted to these performances.

### ELECTRONIC DEVICES AND CAMERAS

Use of recording devices and cameras is not permitted. If you are wearing a digital watch or pager, or if you are carrying a cellular phone, please silence it prior to entering the theatre.

### SENNHEISER® LISTENING SYSTEM

For the convenience of the hearing impaired, the Sennheiser® Listening System is available in the Old Globe Theatre. Lightweight headsets may be obtained from the house manager prior to performances, free of charge.

### PUBLIC TOURS

Go behind the scenes at The Old Globe to learn about the history, three stages, shop and craft areas. Open tours: most Saturdays and Sundays at 10:30am. Groups by reservation. \$5 adults; \$3 seniors and students. Phone (619) 231-1941 x2142 for information/reservations.

### LOST AND FOUND

If you have misplaced a personal item while at the theatre, please contact the Ticket Services Office or Security as soon as possible. If we are unable to locate your item, we'll happily take down your contact information as well as a description of the item and contact you if it is found. The Old Globe does not assume liability for items left behind on premises.

## SPEAKER'S BUREAU

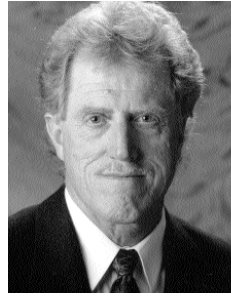
As part of The Old Globe's educational outreach to the community, the Theatre offers a Speakers' Bureau program that will provide a speaker for your club, civic, or church group to talk about the Globe's productions and programs, free of charge. The Old Globe engages several knowledgeable docents, who are available year-round to share the institution's fascinating history and exciting information about the current season of plays. Subject to their availability, several key members of the artistic and production team are also available to speak with your group. For more information on docent speakers' bureau representatives please contact Carol Green at (619) 582-1079. To find out about our artistic and production speakers please contact Erin Anderson at (619) 231-1941 x2355.



## Louis G. Spisto

*Executive Director*

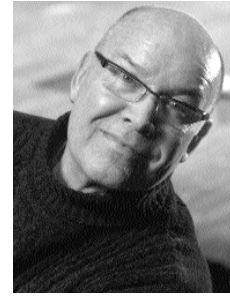
Louis G. Spisto has been Executive Director of The Old Globe since October, 2002. During his tenure, Spisto spearheaded the return of the Globe's acclaimed Shakespeare Repertory Season and produced several world-premiere plays and musicals, including the current Broadway musical *Dirty Rotten Scoundrels*. During the past two seasons, the organization has grown its subscription audience an unprecedented amount, countering a trend in the non-profit theatre industry and resulting in the highest level of attendance in over a decade. Prior to coming to the Globe, Spisto served as the Executive Director of American Ballet Theatre in New York City. While there, he increased ticket income and annual contributions for the organization by nearly 20 percent. He also tripled the Ballet's touring weeks and the resources devoted to education and training programs. Spisto has also served as the President of the Detroit Symphony Orchestra, where he provided fundraising leadership and creative direction for the orchestra's \$60 million renovation project, and helped dramatically increase ticket sales while initiating several new series for the orchestra. Spisto established a reputation as a superb arts executive here in California, where he spent over ten years as the Executive Director of the Pacific Symphony Orchestra in Orange County. During his tenure there, he tripled the orchestra's annual budget, all while eliminating a prior deficit and successfully completing the orchestra's first endowment campaign. In addition, he established a series of innovative recording projects with Sony Classical and oversaw a number of nationally recognized commissioning projects. A strong advocate of arts education, Spisto built one of the largest and most respected music training and outreach efforts. During his career, Spisto has also served as Director of Marketing for the Pittsburgh Symphony Orchestra and Director of Operations and Development for the Performing Arts Center, UC Berkeley. He holds a Masters degree from the University of Wisconsin in Arts Administration and a Bachelors of Business Administration from the University of Notre Dame, and spent many years acting, directing and producing plays and musicals throughout his student days, as well as in professional summer theatre.



## Jerry Patch

*Resident Artistic Director*

Jerry Patch was appointed Resident Artistic Director of The Old Globe in February 2005. He most recently served as the Dramaturg and a member of the long standing artistic team at Southern California's Tony Award®-winning South Coast Repertory (SCR), where he coordinated the development of 150 new plays, including three Pulitzer Prize winners and numerous other finalists. Patch became the top choice for this new role at the Globe due to his many years of artistic accomplishments, his exceptional relationships with the nation's leading directors and playwrights, and his enthusiastic commitment to new work. While at SCR, Patch worked as Dramaturg on numerous new works, including Donald Margulies' *Sight Unseen* and *Brooklyn Boy*, which just opened to critical acclaim on Broadway, Margaret Edson's Pulitzer Prize-winning *Wit*, Howard Korder's *Search and Destroy*, Amy Freed's *The Beard of Avon*, as well as *Intimate Apparel*, *Freedomland* and several world-premieres plays by Richard Greenberg, including *Three Days of Rain* and *A Naked Girl on the Appian Way*. In addition, he co-conceived *The Education of Randy Newman* with Michael Roth and Mr. Newman. Patch also served as the project director of SCR's renowned Pacific Playwrights Festival, which annually introduces seven new plays to an audience of national theatre leaders. Typically, more than 75% of the plays presented receive multiple productions in theatres across the country. During his tenure at SCR, Patch also held the position of Artistic Director (1990-1997) of The Sundance Theatre Program, which included the Sundance Playwrights Laboratory, one of the nation's leading new play development programs. Additionally, he ran the Sundance Summer Theatre, a repertory of 2-3 productions staged outdoors for Utah audiences and The Sundance Children's Theatre, which was dedicated to the development and presentation of new works for family audiences by leading American playwrights. He has also served as a consulting Dramaturg for New York's renowned Roundabout Theatre Company, one of two of the largest theatre companies in the country.



## Jack O'Brien

*Artistic Director*

Mr. O'Brien has been the Artistic Director of The Old Globe in San Diego since 1981. Recent Globe productions: *Dirty Rotten Scoundrels*, *Imaginary Friends*, *Twelfth Night*, *The Full Monty*, *The Seagull*, *The Magic Fire*, Dr. Seuss' *How the Grinch Stole Christmas!*, the world premieres of Associate Artist A.R. Gurney's *Labor Day* and Tina Howe's *Pride's Crossing*, as well as *Time and Again*, *The Doctor Is Out (Getting Away With Murder)* by Stephen Sondheim and George Furth, plus productions of *Henry IV*, *Much Ado About Nothing*, *Oleanna*, *Damn Yankees*, *King Lear*, *Ghosts*, *Hamlet*, *Uncle Vanya*, and world premieres of Terrence McNally's *Up in Saratoga*, A.R. Gurney's *The Snow Ball* and *The Cocktail Hour*, Tom Dulack's *Breaking Legs*, Stephen Metcalfe's *Emily*. Elsewhere: *Dirty Rotten Scoundrels* (Tony nominations, best director and musical), *Henry IV* (Tony Award®); *Hairspray* (Tony Award®); *The Invention of Love* (Tony nominations, best director and play), Lincoln Center Theater; *The Full Monty* (Tony nominations, best director and musical), Eugene O'Neill Theatre; *More to Love*, *Labor Day*, Manhattan Theatre Club; *St. Louis Woman*, City Center Encores!; *Pride's Crossing*, *The Little Foxes*, *Hapgood* (Lucille Lortel Award for Direction, 1995), Lincoln Center; *Damn Yankees* (Tony nomination, best musical revival); *Two Shakespearean Actors* (Tony nominations, best director and play) on Broadway; *Porgy and Bess* for Houston Grand Opera and Broadway (Tony Award), as well as Radio City Music Hall; *The Magic Flute*, San Francisco Opera; *Tosca*, Santa Fe Opera; *Così fan Tutte*, *Aida*, Houston Grand Opera; *The Most Happy Fella*, Michigan Opera and Broadway. TV: *An Enemy of the People*, *All My Sons*, *I Never Sang for My Father*, *Painting Churches*, and *The Skin of Our Teeth*, all for PBS's American Playhouse. Recent awards: 2004 Thomas Degaetani Award (USITT), 2002 "Mr. Abbott" Award (SDCF), 2001 Joan Cullman Award for Extraordinary Creativity, 2001 Joe A. Callaway Award (SDCF), the Drama League's Julia Hansen Award for Excellence in Directing, 2001. Member, College of Fellows of the American Theatre; Honorary Doctor of Humane Letters, University of San Diego. Mr. O'Brien is a member of the College of Fellows of the American Theatre.

Michael G. Murphy  
GENERAL MANAGER

Dave Henson  
DIRECTOR OF MARKETING  
AND COMMUNICATIONS

Todd Schultz  
DIRECTOR OF DEVELOPMENT

Mark Somers  
DIRECTOR OF FINANCE

Richard Seer  
DIRECTOR OF  
PROFESSIONAL TRAINING

Robert Drake  
DIRECTOR OF PRODUCTION

Bonnie Johnston  
DIRECTOR OF EDUCATION

## ARTISTIC

Samantha Barrie  
ARTISTIC COORDINATOR

Diane Sinor  
DRAMATURGY ASSOCIATE

Kim Montelibano Heil  
LITERARY ASSOCIATE

Jan Gist  
VOICE AND SPEECH COACH

*Stage Management*

Leila Knox  
PRODUCTION STAGE MANAGER

Tracy Skoczelas  
ASSISTANT STAGE MANAGER

Marie Natoli  
DOUGLAS PAGLIOTTI  
STAGE MANAGEMENT INTERN

## PRODUCTION

Debra Pratt Ballard  
ASSOCIATE DIRECTOR  
OF PRODUCTION

Ellen Dieter  
COMPANY MANAGER

Carol Donahue  
PRODUCTION COORDINATOR

*Technical*

Benjamin Thoron  
TECHNICAL DIRECTOR

Liz Eisele, Wendy Stymerski  
ASSISTANT TECHNICAL  
DIRECTORS

Amanda Stephens  
RESIDENT DESIGN ASSISTANT

Curt Carlsteen  
SHOP FOREMAN/  
MASTER CARPENTER

Christian Thorsen  
STAGE CARPENTER/  
FLYMAN, GLOBE

Bob Dougherty  
SHOP FOREMAN/  
MASTER CARPENTER, FESTIVAL

Carole Payette  
CHARGE SCENIC ARTIST

Adam Bernard, Suzanne Reyes  
SCENIC ARTISTS

Cynthia Bloodgood, Matthew  
Clark, Kevin Fain, Jim Hopper,  
Tim Jung, Ben Seibert  
CARPENTERS

Stephan Aldrich-Lutz  
CHARGE CARPENTER, CARTER

*Costumes*

Stacy Sutton  
COSTUME DIRECTOR

Charlotte Devaux Shields  
RESIDENT DESIGN ASSISTANT

Maureen McNiallas  
ASSISTANT TO THE DIRECTOR

Shelly Williams  
DESIGN ASSISTANT/SHOPPER

Gwen Dunbam,  
Louise M. Herman  
DRAPERS

Gloria Bradford,  
Anne Glidden Grace  
ASSISTANT CUTTERS

Mary Miller  
COSTUME ASSISTANT

Babs Behling, Erin Cass,  
Erin Schindler  
STITCHERS

Linda Black  
CRAFTS SUPERVISOR

Svi Roussanoff  
CRAFTS ARTISAN

Molly O'Connor  
WIG & MAKEUP SUPERVISOR

Melyssa Swensen  
ASSISTANT TO WIG & MAKEUP  
SUPERVISOR

Angela Miller  
LEAD DRESSER, GLOBE

Marcella Hammond, Francisco  
Morales, Kim Parker, Katie

Rice, Erin Schindler,  
Brian Schmidtberger,  
Molly Yoder-Williams  
DRESSERS/RUN CREW, GLOBE

Angie Land  
RENTAL AGENT

## Properties

Neil A. Holmes  
PROPERTIES DIRECTOR

M.H. Schrenkeisen  
SHOP FOREMAN

Rory Murphy  
LEAD CRAFTSMAN

Shannon Dedman  
PROPERTIES BUYER

Ryan Buckalew, David Buess,  
Kristin Campbell  
CRAFTSPERSONS

Pat Cain  
PROPERTY MASTER, GLOBE

Marcus Polk  
PROPERTY MASTER, CARTER

## Lighting

Chris Rynne  
LIGHTING DIRECTOR

Tonnie Ficken  
MASTER ELECTRICIAN, GLOBE

Jim Dodd  
MASTER ELECTRICIAN, CARTER

Kevin Liddell  
MASTER ELECTRICIAN, FESTIVAL

Kristen Flores, Lacy Flores,  
Megan Fonseca, Allyson  
Guertin, Matt Hibbs, Tricia  
Lesinski, Andy Lowe, Miranda  
Mikesh, Leah Nellman,  
Jennifer Pritchett, Omar  
Ramos, Andrea Ryan, Stacey  
Schrom, Elizabeth Squire,  
Chad Stanner  
ELECTRICIANS

## Sound

Paul Peterson  
SOUND DIRECTOR

Erik Carstensen  
MASTER SOUND  
TECHNICIAN, GLOBE

Rachel Eaves  
MASTER SOUND  
TECHNICIAN, CARTER

Jeremy Nelson  
MIC RUNNER, GLOBE

## ADMINISTRATION

Brian Ulery  
ASSISTANT TO THE  
GENERAL MANAGER

## Information Technology

Dean Yager  
INFORMATION TECHNOLOGY  
MANAGER

Thad Steffen  
INFORMATION TECHNOLOGY  
ASSISTANT

James Lawrence  
CONVERSION SUPPORT  
ASSISTANT

## Human Resources

Sandra Parde  
HUMAN RESOURCES  
ADMINISTRATOR

Jenny Kazan-Mills  
CONSULTANT

## Maintenance

Chad Oakley  
FACILITIES MANAGER

Violanda Corona, Ismael  
Delgado, Humberto Elvira,  
David Gaspar, Roberto  
Gonzalez, Reyna Huerta,  
Margarita Meza, Jose Morales,  
Joshua Ortiz, Alfredo Rios,  
Maria Rios  
BUILDING STAFF

## PROFESSIONAL TRAINING

Lance Bower  
PROGRAM COORDINATOR

Maria Carrera, Cynthia  
Caywood, Sabin Epstein,  
Robert Berry Fleming, Gerhard  
Gessner, Jan Gist, Peter  
Kanelos, Fred Robinson, Liz  
Shipman  
MFA FACULTY

James Feinberg, Corey  
Johnston, Robin Sanford  
Roberts, Crystal Verdon  
MFA PRODUCTION STAFF

## EDUCATION

Raúl Moncada  
EDUCATION ASSOCIATE

Holly Ward  
TOUR COORDINATOR

Carol Green  
SPEAKERS BUREAU COORD.

Forrest Aylsworth, Janet  
Hayatshahi, Sandra Ruiz  
TEACHING ARTISTS

## FINANCE

Jannet I. Wise  
ASSOCIATE DIRECTOR OF  
FINANCE

J. Adam Latham  
PAYROLL CLERK/  
ACCOUNTING ASSISTANT

Diane Jenkins  
ACCOUNTING ASSISTANT

Lynn Dougherty  
RECEPTIONIST

## DEVELOPMENT

Brad Ballard  
ASSOCIATE DIRECTOR,  
MAJOR & PLANNED GIFTS

Chris Graham  
ASSOCIATE DIRECTOR,  
CORPORATE RELATIONS

Annamarie Maricle  
ASSOCIATE DIRECTOR,  
INSTITUTIONAL GRANTS

Michele Prosser  
ASSOCIATE DIRECTOR,  
ANNUAL FUND

Eileen A. Prisby  
EVENTS MANAGER

Diane Addis  
MEMBERSHIP ADMINISTRATOR

Erin McKown  
DEVELOPMENT ASSISTANT

Diana Steffen  
DEVELOPMENT ASSISTANT

## Donor Services

Babs Behling, Eve Childs,  
Barbara Lekes, Landin Rice,  
Judy Zimmerman  
SUITE CONCIERGES

## MARKETING

Becky Biegelsen  
PUBLIC RELATIONS DIRECTOR

Frank Teplin  
AUDIENCE DEVELOPMENT  
MANAGER

Cate Burke  
GROUP SALES MANAGER

Elisha Solmes  
PUBLICATIONS COORDINATOR

Erin Anderson  
PUBLIC RELATIONS ASSISTANT

Peggy Ryan  
MARKETING ASSISTANT

Judy Zimmerman  
MARKETING/EVENTS  
ASSISTANT

Erica Dei  
GRAPHIC DESIGNER

Craig Schwartz  
PRODUCTION PHOTOGRAPHER

## Subscription Sales

Scott Cooke  
SUBSCRIPTION SALES MANAGER

Russ Allen, Anna Bowen-Davies,  
Kat Castelblanco, Efrain Cornejo,  
Carol Dawson, Stanley Einhorn,  
Arthur Faro, Andrew Fink, Jessica  
Morrow, Ken Seper, Grant  
Walpole  
SUBSCRIPTION SALES REPS.

## Ticket Services

Shari Ressel  
TICKET SERVICES MANAGER

Tim Cole, Shouna Shoemake  
ASSISTANT MANAGERS

Jean McKissick  
DATA COORDINATOR

Lyle Wilson  
LEAD TICKET SERVICES REP.

Randy Acosta, John Boaz, James  
Dublino, Monette Duewell, Dru

Garcia, Mame Gile, Bernadette  
Hobson, John Houghton,

Meredith King, Michael Knudsen,  
April Labine-Katko, Julie Lockard,

Grace Manuel, Kendra McCall,  
Caryn Morgan, Carlos Quezada,

Raab Rashi, Jessica Seaman,  
Brandon Smithy, Wendy Telford,

Steven Warner  
TICKET SERVICES REPS.

## PATRON SERVICES

Mike Callaway  
THEATRE MANAGER

Grace Farinas  
FRONT OF HOUSE ASSISTANT

Merlin D. "Tommy" Thompson  
PATRON SERVICES REP.

Teresa McGee, Ashley Roberts  
HOUSE MANAGERS

Dana Juhl  
FOOD & BEVERAGE MANAGER

Kristin Dishman, Ashley Gregory,  
Brandi Mahan, Roland Roberge,

Brock Roser, Tess Rowley, Anne-  
Marie Shafer, Kim Thurston,

Felicia Tobias  
PUB STAFF

Rose Espiritu,  
Stephanie Rakowski  
GIFT SHOP SUPERVISORS

## Security/Parking Services

Rachel "Beahr" Garcia  
SECURITY/PARKING  
SERVICES SUPERVISOR

Sherisa Eselin, Irene Herrig,  
David Nguyen  
SECURITY OFFICERS

Deborah Elliot, John Boxell,  
Janet Larson, Melissa Lopez,

Brian Nguyen  
PARKING LOT ATTENDANTS

Ryan Barsotti, David Nguyen,  
Marc Brickman  
V.I.P. VALET ATTENDANTS